

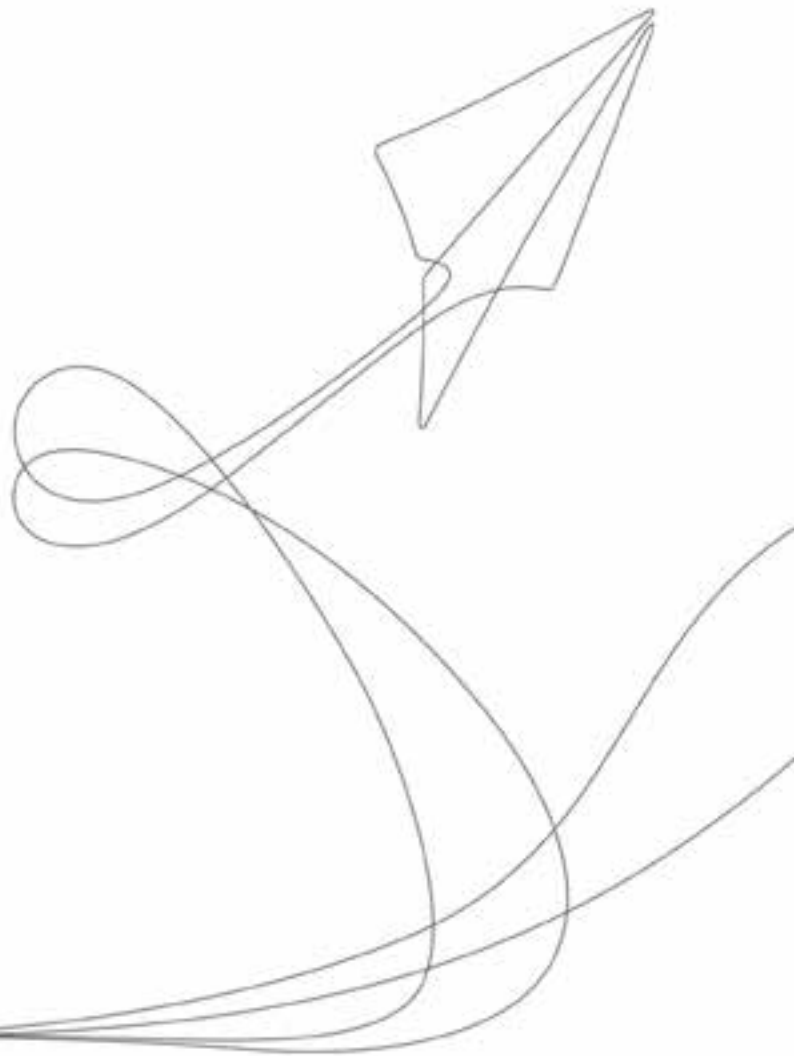
**Beazley Furlonge Limited**

Syndicate 5623 at Lloyd's

22 Bishopsgate  
London  
EC2N 4BQ

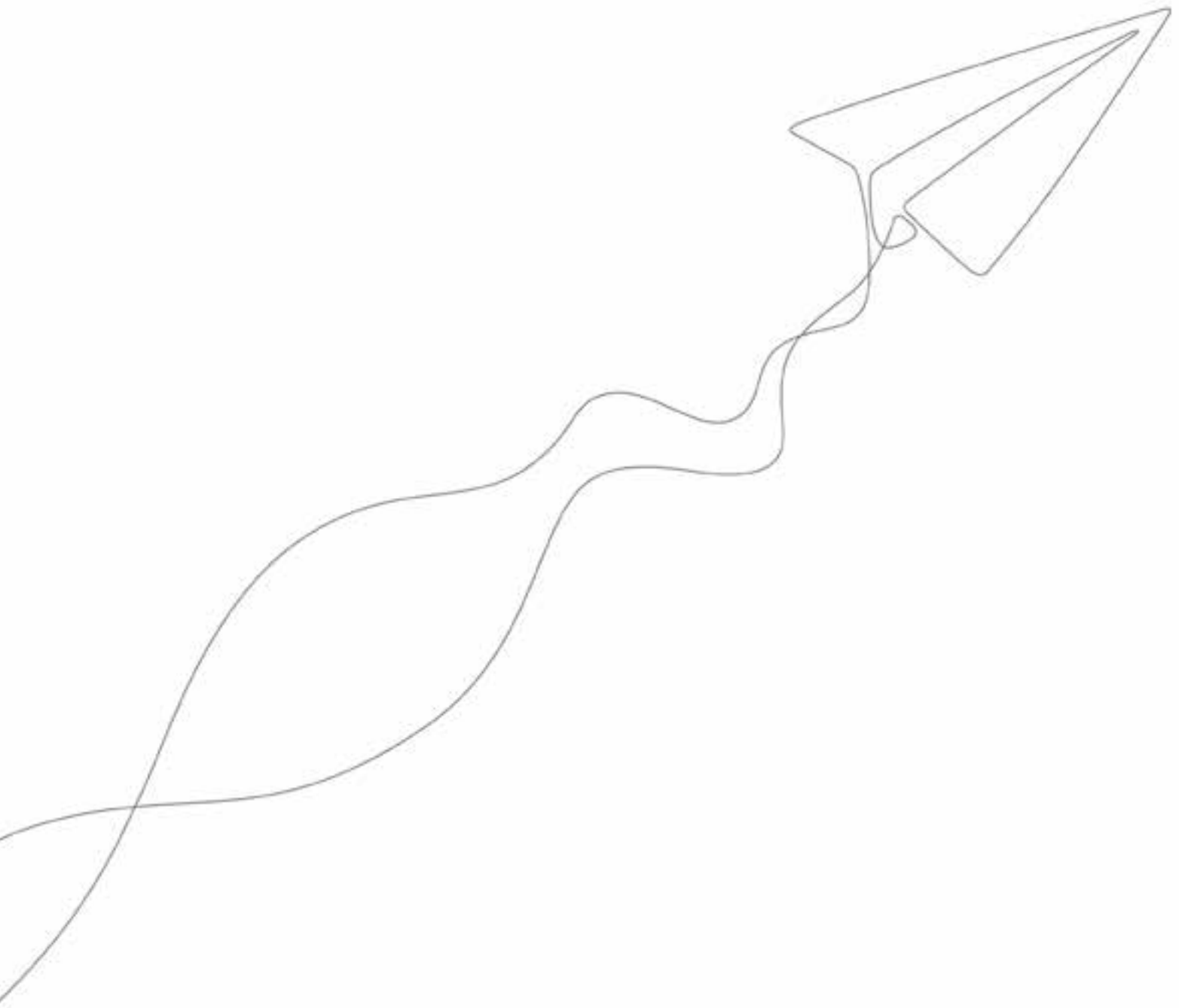
T +44 (0)20 7667 0623

[info@beazley.com](mailto:info@beazley.com)  
[www.beazley.com](http://www.beazley.com)



beazley

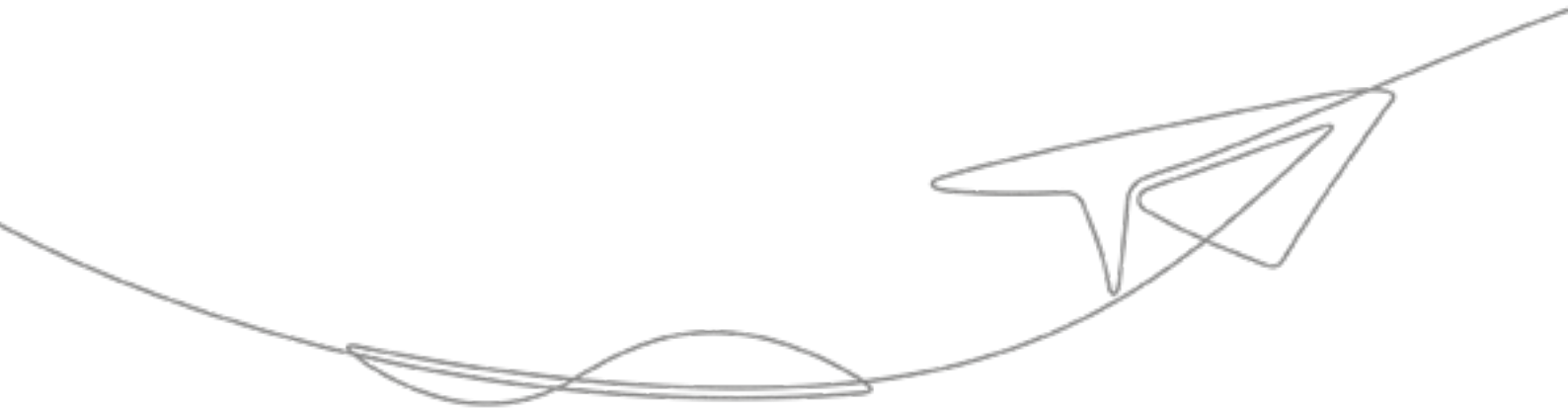
*Baszler Fund for Judges' Annual Report 2021*



# Explore. Create. Build...

Beazley Furlonge Limited | Syndicate 5623 at Lloyd's  
Annual report 2021

# Welcome to our Annual report 2021



The Syndicate's growth trajectory continues to move in the right direction while maintaining delivery of strong results, in this its fourth year in business.

## Contents

01	Highlights
02	Strategic report of the managing agent
04	Managing agent's report
11	Statement of managing agent's responsibilities
12	Independent auditor's report to the members of syndicate 5623
15	Statement of comprehensive income
16	Balance sheet
17	Cash flow statement
17	Statement of changes in members' balances
18	Notes to the syndicate annual accounts
31	2019 year of account syndicate 5623
32	Managing agent's report
33	Statement of managing agent's responsibilities
34	Independent auditor's report to the members of Syndicate 5623 - 2019 closed year of account
37	Profit or loss account
38	Balance sheet
39	Cash flow statement
40	Statement of changes in members' balances
41	Notes to the syndicate underwriting year accounts
45	Two-year summary of closed year result at 31 December 2021
46	Managing agent corporate information

# Highlights

---

Syndicate capacity

**£144.2m**

(2020: £83.5m)

Claims ratio

**75%**

(2020: 79%)

Gross premiums written

**\$161.1m**

(2020: \$86.0m)

Expense ratio

**25%**

(2020: 25%)

Earned premiums, net of reinsurance

**\$123.1m**

(2020: \$61.0m)

Combined ratio

**100%**

(2020: 104%)

Profit for the financial year

**\$1.6m**

(2020: loss of \$2.0m)

# Strategic report of the managing agent

## Overview

Syndicate 5623 (the 'syndicate') was established in 2018 as a special purpose arrangement syndicate to write market facility business via a quota share from syndicate 3623 (the 'host').

The capacities of the syndicates managed by Beazley Furlonge Ltd are as follows:

	2021 £m	2020 £m
2623	2,348.4	1,932.4
623	514.8	422.6
<b>5623</b>	<b>144.2</b>	<b>83.5</b>
6107	70.5	69.5
3623	65.4	71.9
3622	27.8	25.9
<b>Total</b>	<b>3,171.1</b>	<b>2,605.8</b>

The result for the syndicate for the year ended 31 December 2021 is a profit of \$1,552.6k (2020: loss of \$2,032.2k).

## Year of account results

The 2019 year of account has closed with a profit on capacity of 2.1%. The 2020 year of account is currently forecasting a return on capacity of 2%.

## Rating environment

Premium rates charged for renewal business increased by 16% during 2021 (2020: increased by 19%).

## Combined ratio

The combined ratio of an insurance provider is a common measure of its operating performance and represents the ratio of its total costs (excluding foreign exchange movements) to net earned premium. The syndicate's combined ratio for 2021 was 100% (2020: 104%).

## Claims

The claims ratio of an insurance provider is a measure of the claims experience and represents the ratio of its net insurance claims to net earned premium. The 2021 claims ratio for syndicate 5623 was 75% (2020: 79%).

## Net operating expenses

Net operating expenses, including business acquisition costs and administrative expenses, were \$29,991.3k (2020: \$15,414.7k). The breakdown of these costs is shown below:

	2021 \$'000	2020 \$'000
Brokerage costs	24,638.3	12,170.1
Other acquisition costs	116.7	129.5
<b>Total acquisition costs</b>	<b>24,755.0</b>	<b>12,299.6</b>
Administrative and other expenses	5,236.3	3,115.1
<b>Net operating expenses<sup>1</sup></b>	<b>29,991.3</b>	<b>15,414.7</b>

1 A further breakdown of net operating expenses can be seen in note 4.

As a percentage of net earned premium, brokerage costs are approximately 20% (2020: 20%). Brokerage costs are deferred and expensed over the life of the associated premiums in accordance with accounting guidelines. Other acquisition costs comprise costs that have been identified as being directly related to underwriting activity (e.g. underwriters' salaries and Lloyd's box rental). These costs are also deferred in line with premium earning patterns. Administrative expenses comprise primarily IT costs, facilities costs, Lloyd's central costs and other support costs.

The expense ratio of an insurance provider is a measure of the net operating expenses to net earned premium. The expense ratio for 2021 is 25% (2020: 25%).

## Reinsurance

Syndicate 5623 did not purchase any outwards reinsurance during 2021 (2020: nil). However the syndicate does receive the benefit from reinsurance contracts entered into by the host syndicate 3623 as the result is ceded net of such reinsurance contracts.

## Solvency II

The Solvency II regime came into force on 1 January 2016. Beazley now provides Solvency II pillar 3 reporting to Lloyd's for the syndicate. Under Solvency II requirements, the syndicate is required to produce a Solvency Capital Requirement ('SCR') which sets out the amount of capital that is required to reflect the risks contained within the business. Lloyd's reviews the syndicate's proposed SCR each year in conjunction with the syndicate's business plan.

## Solvency capital requirement

The current SCR has been established using our Solvency II approved internal model which has been run within the regime as prescribed by Lloyd's. In order to perform the capital assessment, we have made significant investments in both models and process:

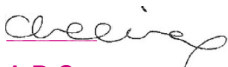
- we use sophisticated mathematical models that reflect the key risks in the business allowing for probability of occurrence, impact if they do occur, and interaction between risk types. A key focus of these models is to understand the risk posed to individual teams, and to the business as a whole, of a possible deterioration in the underwriting cycle; and
- the internal model process is embedded so that teams can see the direct and objective link between underwriting decisions and the capital allocated to that team. This gives a consistent and comprehensive picture of the risk/reward profile of the business and allows teams to focus on strategies that improve return on capital.

## Outlook

Syndicate 5623's fourth year in business saw ongoing success, both in achieving its business plan and delivering strong results. The 2019 year of account has closed with a return on capacity of 2.1%. The 2020 year of account is currently forecasting a return on capacity of 2% despite having already been impacted by adverse claims experience as a result of Hurricanes Ida, Laura and Storm Uri.

Beazley Smart Tracker works by designing and selecting approved leaders into a bespoke facility that meets the needs of brokers and their clients and there is a strong pipeline of brokers asking for support. The syndicate writes business ranging from large cross-class facilities, to single class quota shares, and consortia. The syndicate's underwriters manage participation on facilities to deliver an optimised business plan portfolio, with the ability to scale participation on lines of business seeing the most positive rate change. The 2021 underwriting year has experienced strong premium growth and the syndicate continued to see reductions in expenses as it grew, delivering an expense ratio of 24% in 2021, demonstrating the success of its low-cost tracker model. This growth was achieved through a difficult claims environment as the 2021 underwriting year was adversely impacted by natural catastrophe events such as Hurricane Ida and Storm Uri. Due to syndicate 5623's performance, it is significantly oversubscribed by third party capital.

The recent tragic invasion of Ukraine which has sparked war in Eastern Europe is an ongoing reminder of the complexities the syndicate faces when navigating risk. However, looking forward it is the hope that the syndicate can continue to offer opportunities to existing investors and to new ones and we look forward to reporting continued success for the syndicate next year.



**A P Cox**

**Active Underwriter**

2 March 2022

# Managing agent's report

---

The managing agent presents its report for the year ended 31 December 2021.

This annual report is prepared using the annual basis of accounting as required by Statutory Instrument No 1950 of 2008, the Insurance Accounts Directive (Lloyd's Syndicate and Aggregate Accounts) Regulations 2008 and applicable United Kingdom Accounting Standards, including Financial Reporting Standard 102: The Financial Reporting Standard applicable in the United Kingdom and Republic of Ireland ('FRS102') and Financial Reporting Standard 103: Insurance Contracts ('FRS103') in accordance with the provisions of Schedule 3 of the Large and Medium-size Companies and Groups (Accounts and Reports) Regulations relating to insurance companies and are available on pages 32-46 of this document.

## Principal activity

The principal activity of syndicate 5623 is the reinsurance of market facilities underwritten by syndicate 3623 at Lloyd's.

## Business review

A review of the syndicate's activities is included in the strategic report.

## Risk governance and reporting

Beazley Furlonge Limited's board of directors has the responsibility for defining and monitoring the risk appetite within which Beazley Furlonge Limited ('BFL') and the syndicates operate (collectively, 'Beazley'), with key individuals and committees accountable for day-to-day management of risks and controls. Regular reporting by the risk management team in board meetings and senior management committees ensures that risks are monitored and managed as they arise.

## Climate change/Responsible business

Led by Beazley plc's Board and supported by the Boards of Beazley Furlonge Ltd, Beazley Insurance Dac, and Beazley Insurance Company Inc, ESG issues and climate related risk have become regular agenda items throughout 2021. In March 2021 we launched our first Responsible Business Strategy. This document, and the subsequent update which is published alongside the Beazley plc annual report and accounts, sets out the goals and targets across a wider range of Environmental, Social and Governance (ESG) issues, including climate change.

In addition to the summary Responsible Business report, Beazley plc has disclosed its compliance with the TCFD's Recommendations and Recommended Disclosures at the consolidated group level in the Beazley plc annual report and accounts. The 2021 Beazley annual report and accounts can be found here: <https://reports.beazley.com/2021-annual/>

## Risk management

As a risk-taking organisation, we pride ourselves on understanding the drivers of risk for our clients and our business and in seeking ways to mitigate it. As the syndicate continues its journey of change and growth, the risk function is focused on delivering complementary risk oversight improvements.

The last two years of navigating the pandemic have demonstrated just how quickly a risk can change. It demonstrated the importance of the syndicate continuing to monitor the development of other significant risks. As an example, the risk that cyber threats pose to the global economy, to society and to Beazley has climbed up the risk function's agenda. Similarly, the changing scale and profile of natural catastrophe risk driven by climate change has become apparent. The Climate change and Responsible business section of this report sets out our approach to risk in managing climate change.

As a risk function we must be ready to explore the changing risk landscape. By creating a risk culture that embeds risk management into our daily operations, built around a robust risk framework, we are able to manage challenges to our assumptions about risks as they arise, whilst protecting our business and those of our clients.

You will be able to read the details of the performance of our risk framework further in this report, but we would like to pick out some highlights from our work on risk during 2021 below.

During 2021 we have been actively enhancing the risk management framework to ensure it supports our risk oversight responsibilities and effective challenge of the changing risk landscape. This includes risks arising from our growth plans, and the business' programme of operational enhancement. Our risk framework will also need to adapt to ensure it remains able to manage an increasingly complex risk and controls environment. Just as importantly, we will need to stress test management's assumptions about risk mitigation to ensure they will remain resilient should risks crystallise.



While we manage the challenges that growth and operational enhancement can bring, we also need to address emerging and climate risks as well as regulatory and legal changes such as preparing for the Beazley plc implementation of IFRS 17, IFRS 9 and BEIS proposals for governance reform. The risk function is actively engaged in these initiatives to provide second line oversight and ensure the risk framework adapts accordingly.

Key to the success of the performance of risk management across the business has been building the collaboration between Beazley's assurance functions, in particular the compliance and risk teams under the new structure, to deliver a more robust second line oversight function. As we move forward, working with our colleagues across the business to further embed risk management into our business processes will ensure that we are able to achieve our goals supported by a robust risk culture.

### Control statement

The latest chief risk officer report to the Board has confirmed that the control environment has not identified any significant failings or weaknesses in key processes.

### Risk management philosophy

The syndicate's risk management philosophy is to balance the risks the business takes on with the associated cost of controlling these risks, whilst also operating within the risk appetite agreed by the Board. In addition, our risk management processes are designed to continuously monitor our risk profile against risk appetite and to exploit opportunities as they arise.

### Risk management strategy

The Beazley Furlonge Limited Board has delegated executive oversight of the risk management department to the executive committee, which in turn has delegated immediate oversight to the risk and regulatory committee. The Board has also delegated oversight of the risk management framework to the audit risk committee.

Clear roles, responsibilities and accountabilities are in place for the management of risks and controls, and all employees are aware of the role they play in all aspects of the risk management process, from identifying sources of risk to playing their part in the control environment. The impact of each risk is recorded in the risk register on a 1:10 likelihood of that risk manifesting in the next 12 months. A risk owner has been assigned responsibility for each risk, and it is the responsibility of that individual to periodically assess the impact of the risk and to ensure appropriate risk mitigation procedures are in place. External factors facing the business and the internal controls in place are routinely reassessed and changes are made when necessary.

On an annual basis the Board agrees the risk appetite for each risk event and this is documented in the risk management framework document. The residual financial impact is managed in a number of ways, including:

- mitigating the impact of the risk through the application of controls;
- transferring or sharing risk through outsourcing and purchasing insurance and reinsurance; and
- tolerating risk in line with the risk appetite.

In addition, the following core risk management principles have been adopted:

- there is a culture of risk awareness, in which risks are identified, assessed, challenged and managed;
- risk management is a part of the wider governance environment in which challenge is sought and welcomed;
- risk mitigation techniques employed are fit for purpose and proportionate to the business;
- risk management is a core capability for all employees;
- risk management is embedded in day-to-day activities;
- risk management processes are robust and supported by verifiable management information; and
- risk management information and reporting is timely, clear, accurate and appropriately escalated.

# Managing agent's report

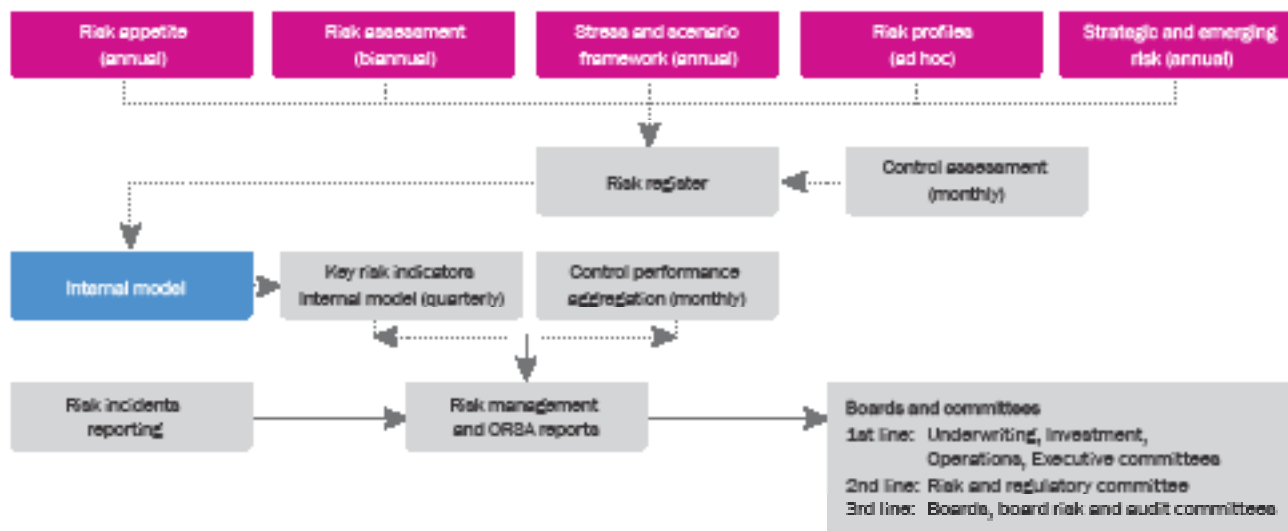
## *continued*

### Risk Management Framework

The managing agent takes an enterprise-wide approach to managing risk, following the syndicate's risk management framework. The framework establishes our approach to identifying, measuring, mitigating and monitoring the syndicate's key risks. The managing agent has adopted the 'three lines of defence' framework. Across the business there are two defined risk-related roles: risk owner and control reporter. Each risk event is owned by the risk owner, who is a senior member of staff. Risk owners, with support and challenge provided by the risk management team, perform a risk assessment twice a year, including an assessment of heightened and emerging risks.

Business risk management Risk ownership	Risk management Risk oversight	Internal audit Risk assurance
<ul style="list-style-type: none"> <li>Identifies risk</li> <li>Assesses risk</li> <li>Mitigates risk</li> <li>Monitors risk</li> <li>Records status</li> <li>Remediates when required</li> </ul>	<ul style="list-style-type: none"> <li>Challenge that risks are being identified</li> <li>Assess the risk mitigation strategy</li> <li>Monitor that controls are operating effectively</li> <li>Reports to committees and Board on risk and control issues with risk management opinions</li> </ul>	<ul style="list-style-type: none"> <li>Independently tests control design</li> <li>Independently tests control operation</li> <li>Reports to committees and Board</li> </ul>

The risk management framework comprises a number of risk management components, which when added together describe how risk is managed on a day-to-day basis. The framework includes a risk register that captures the risk universe (approximately 50 risk events grouped into eight risk categories: insurance, market, credit, liquidity, operational, regulatory and legal, Group and strategic), the risk appetite set by the Board, and the control environment that is operated by the business to remain within the risk appetite and which is monitored and signed off by control reporters.



The diagram above illustrates the components of the risk management framework as operated across Beazley.

In summary, the Board identifies risk, assesses risk and sets risk appetite. The business then implements a control environment which describes how the business should operate to stay within risk appetite. The risk management function reviews and challenges these assessments and reports to the Board on how well the business is operating, using a risk management report.

For each risk, the risk management report brings together a view of how successfully the business is managing risk and whether there have been any events that we can learn from (risk incidents). Finally, the framework is continually evaluated and where appropriate improved, through the consideration of stress and scenario testing, themed reviews using risk profiles, and an assessment of strategic and emerging risks.

During 2021 the risk management framework was enhanced with regards to evidencing risk management challenge, assessing emerging risks and assessing risk culture. A suite of risk management reports are provided to the Boards and committees to assist senior management and Board members to discharge their oversight and decision making responsibilities. The risk reports include the risk appetite statement, the risk management report, risk profiles, stress and scenario testing, reverse stress testing, an emerging and strategic report, a report to the Beazley plc remuneration committee and the Own Risk and Solvency Assessment (ORSA) report.

The internal audit function considers the risk management framework in the development of its audit universe to determine its annual risk-based audit plan. The plan is based on, among other inputs, the inherent and residual risk scores as captured in the risk register. Finally, a feedback loop operates, with recommendations from the internal audit reviews being assessed by the business and the risk management function for inclusion in the risk register as appropriate.

## The risks to financial performance

The Board of the managing agent monitors and manages risks grouped into eight categories, which cover the universe of risk that could affect the syndicate. The Board confirm that they have undertaken a robust assessment of the principal and emerging risks and uncertainties that the syndicate faces. The Board considers insurance and strategic risk categories to be the most significant for Beazley. Refer to below for further discussion of climate change risk, and how it interacts with the risks and uncertainties discussed here.

### Insurance risk

Given the nature of the syndicate's business, the key risks that impact financial performance arise from insurance activities. The main insurance risks can be summarised in the following categories:

- **Natural catastrophe risk:** The risk of one or more large events caused by nature affecting a number of policies and therefore giving rise to multiple losses. Given the syndicate's risk profile, such an event could be a hurricane, major windstorm, earthquake or wildfires. This risk is monitored using exposure management techniques to ensure that the risk and reward are appropriate and that the exposure is not overly concentrated in one area.
- **Non-natural catastrophe risk:** This risk is similar to natural catastrophe risk except that multiple losses arise from one event caused by mankind. Given the syndicate's risk profile, examples include a coordinated cyber-attack, global pandemic, losses linked to an economic crisis, an act of terrorism, an act of war or a political event. This risk is monitored using exposure management techniques to ensure that the risk and reward are appropriate and that the exposure is not overly concentrated in one area.
- **Reserve risk:** The syndicate has a consistent reserving philosophy. However, there is a risk that the reserves put aside for expected losses turn out to be insufficient. This could be due to any of the three drivers of risk described above. The managing agent uses a range of techniques to mitigate this risk including a detailed reserving process which compares estimates established by the claims team with a top-down statistical view developed by the actuarial team. A suite of metrics is also used to ensure consistency each year.
- **Anti-selection risk:** There is a risk that insurance policies included in market facilities perform poorer than the market average. This risk is managed through the underwriting selection criteria and ongoing monitoring for each market facility.
- **Single risk losses:** Given the size of policy limits offered on each risk, it is unlikely that the poor performance of one policy will have a material impact on the syndicate's financial performance.

# Managing agent's report

## *continued*

---

### Strategic risk

Alongside these insurance risks, the success of the syndicate depends on the execution of an appropriate strategy. The main strategic risks can be summarised as follows:

- **Strategic decisions:** The syndicate's performance would be affected in the event of making strategic decisions that do not add value. The managing agent on behalf of the syndicate mitigates this risk through the combination of recommendations and challenge from Non-Executive Directors, debate at the Beazley plc executive committee and input from the strategy and performance group (a group of approximately 30+ senior individuals from across different disciplines at Beazley).
- **Environment:** There is a risk that the chosen strategy cannot be executed because of the environmental conditions within which the syndicate operates, thereby delaying the timing of the strategy.
- **Communication:** Having the right strategy and environment is of little value if the strategy is not communicated internally so that the whole Group is heading in the same direction, or if key external stakeholders are not aware of the syndicate's progress against its strategy.
- **Senior management performance:** There is a risk that senior management could be overstretched or could fail to perform, which would have a detrimental impact on the syndicate's performance. The performance of the senior management team is monitored by the chief executive and culture and people team and overseen by the Beazley plc nomination committee.
- **Reputation:** Although reputational risk is a consequential risk, i.e. it emerges upon the occurrence of another risk manifesting, it has the potential to have a significant impact on an organisation. The Beazley Management limited staff who work on behalf of the syndicate are expected to act honourably by doing the right thing.
- **Flight:** There is a risk that the managing agent could be unable to deliver its strategy due to the loss of key personnel. The syndicate has controls in place to identify and monitor this risk, for example, through succession planning.
- **Crisis management:** This is the risk caused by the destabilising effect of the syndicate having to deal with a crisis and is mitigated by having a detailed crisis management plan.
- **Corporate transaction:** There is a risk that Beazley could undertake a corporate transaction which did not return the expected value to the syndicate. This risk is mitigated through the due diligence performed, the financial structure of transactions and the implementation activity.

Under the environment risk heading, the Board identifies and analyses emerging and strategic risk on an annual basis for discussion at the Beazley's Board strategy day in May.

### Other enterprise risks

The remaining six risk categories monitored by the Board are:

- **Market (asset) risk:** This is the risk that the value of investments could be adversely impacted by movements in interest rates, exchange rates, default rates or external market forces. This risk is monitored by the investment committee.
- **Operational risk:** This is the risk of failures of people, processes and systems or the impact of an external event on the syndicate's operations, and is monitored by the operations committee. An example would be a cyber-attack having a detrimental impact on our operations.
- **Credit risk:** The syndicate has credit risk by exposure to the host's brokers which is monitored by the underwriting committee.
- **Regulatory and legal risk:** This is the risk that the syndicate might fail to operate in line with the relevant regulatory framework in the territories where it does business. Of the eight risk categories, the Board has the lowest tolerance for this risk. This risk is monitored by the risk and regulatory committee.
- **Liquidity risk:** This is the risk that the syndicate might not have sufficient liquid funds following a catastrophic event. The investment committee monitors this risk which, given the nature of the asset portfolio, is currently small.
- **Group risk:** The key risk is a deterioration in the Group's culture which leads to inappropriate behaviour, actions or decisions. This is monitored through engagement surveys, staff feedback and regular dialogue with senior management. The other main Group risk is that one Group entity operates to the detriment of another Group entity. The Beazley plc Board monitors this risk through the reports it receives from each entity.

### Financial crime risk

The managing agent also considered anti-bribery and corruption risk across all risk categories. We are committed to ensuring that all business is conducted in an ethical and honest manner, and that we are not involved in any illicit activity defined under the UK Bribery Act 2010 and US Foreign Corrupt Practices Act 1977. This risk includes the risk of bribery and corruption we are exposed to and manifests itself in the susceptibility to unethical or dishonest influences whereby illicit payments and/or inducements are either made or received.

Such activity has severe reputational, regulatory and legal consequences, including fines and penalties.

Considerations relevant to this risk include the nature, size and type of transactions, the jurisdiction in which transactions occur, and the degree to which agents or third parties are used during such transactions.

Every employee and individual acting on the syndicate's behalf is responsible for maintaining our reputation. We have a zero-tolerance approach to bribery and corruption and are committed to acting professionally, fairly and with integrity in all aspects of our business. In doing so, we aim to recruit and retain high-calibre employees who carry out their responsibilities honestly, professionally and with integrity. We maintain a number of policies designed to prevent any risk of bribery and corruption, which are communicated to all employees and supplemented with appropriate training.

### Climate change risk

The changing global climate is recognised as an important emerging risk due to its widespread potential impact on the global population, environment and economy. A key aspect of the syndicate's business model is to support our clients who have been affected by natural catastrophes, helping them return to pre-catastrophe conditions as soon as possible. As a speciality insurer, various classes of business we underwrite are subject to the effect climate change presents to the risk environment. More detailed information on Beazley's focus on responsible business and sustainability can be found within the annual report of Beazley plc (available at [www.beazley.com](http://www.beazley.com)).

We acknowledge and accept that over time climate change could impact the risks facing our insureds and we aim to manage the resulting risk to the syndicate as described below:

- **Pricing risk:** This is the risk that current pricing levels do not adequately consider the prospective impact of climate change, resulting in systemic under-pricing of climate-exposed risks. The syndicate's business planning process establishes how much exposure in certain classes of business or geographic area we wish to accept. We benefit from a feedback loop between our claims and underwriting teams to ensure that emerging claims trends and themes can be contemplated in the business planning process, the rating tools and the underwriter's risk-by-risk transactional level considerations. Our underwriters are empowered to think about climate risk during their underwriting process in order to determine the implication on each risk.
- **Catastrophe risk:** This is the risk that current models do not adequately capture the impacts of climate change on the frequency, severity or nature of natural catastrophes or other extreme weather events (e.g. wildfires) that could drive higher-than-expected insured losses. The syndicate utilises commercial catastrophe models to facilitate the estimation of aggregate exposures based on the syndicate's underwriting portfolio. These catastrophe models are updated to reflect the latest scientific perspectives. Catastrophe models are evolving to include new or secondary perils which may be related to climate change. In addition, the syndicate runs a series of Natural Catastrophe Realistic Disaster Scenarios ('RDS') on a monthly basis which monitors the syndicate's exposure to certain scenarios that could occur. These RDS include hurricanes in the US, typhoons in Japan, European windstorms and floods in the UK.
- **Reserve risk:** This is the risk that established reserves are not sufficient to reflect the ultimate impact climate change may have on paid losses. This includes unanticipated liability risk losses arising from our clients facing litigation if they are held to be responsible for contributing to climate change, or for failing to act properly to respond to the various impacts of climate change. With support from the Beazley actuarial team, claims teams and other members of management the syndicate establishes financial provisions for our ultimate claims liabilities. The syndicate maintains a prudent approach to reserving to help mitigate the uncertainty within the reserves estimation process.

# Managing agent's report

## *continued*

---

- **Asset risk:** This is the risk that climate change has a significant impact across a number of industries which may negatively impact the value of investments in those companies. The syndicate considers the impact of climate change on the host's asset portfolio by seeking to incorporate an assessment of environmental risks in the investment process. The managing agent subscribes to the research services of a specialist company in the field of environmental, social and governance research and have integrated their proprietary ratings into the internal credit process applied to investments in corporate debt securities. A minimum standard for the environmental, social and governance performance is defined and companies not meeting the required standard will be excluded from the approved list of issuers. The analysis also includes a consideration of the sustainability of each company with regard to the potential decline in demand in specific sectors.
- **External event risk:** This is the risk that the physical impact of climate related events has a material impact on our own people, processes and systems leading to increased operating costs or the inability to deliver uninterrupted client service. The syndicate has business continuity plans in place to minimise the risk of an interrupted client service in the event of a disaster.
- **Commercial management risk:** The syndicate aims to minimise where possible the environmental impact of our business activities and those that arise from the occupation of our office spaces. As we operate in leased office spaces our ability to direct environmental impacts is limited. However we do choose office space with climate change mitigation in mind, and engage with our employees, vendors and customers in an effort to reduce overall waste and our environmental footprint.
- **Credit risk:** As a result of material natural catastrophe events, there is a risk that our counterparties are unable to pay balances due to the syndicate. If the frequency or severity of these events is increased due to climate change this could cause a corresponding increase in credit risk.
- **Regulatory and legal risk:** Regulators, investors and other stakeholders are becoming increasingly interested in companies' responses to climate change. Failure to appropriately engage with these stakeholders and provide transparent information may result in the risk of reputational damage or increased scrutiny. The syndicate regularly monitors the regulatory landscape to ensure that we can adhere to any changes in relevant laws and regulations. This includes making any necessary regulatory or statutory filings with regard to climate risk.
- **Liquidity risk:** Linked to the underwriting and credit risks noted above, there is a risk that losses resulting from unprecedented natural disasters or extreme weather could erode the ability of the syndicate to pay claims and remain solvent. Beazley establishes capital at a 1:200 level based on the prevailing business plan.

## Directors

A list of Directors of the managing agent who held office during the year can be found on page 29 of this syndicate annual report.

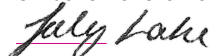
## Disclosure of information to the auditor

The Directors of the managing agent who held office at the date of approval of this managing agent's report confirm that, so far as they are each aware, there is no relevant audit information of which the syndicate's auditor is unaware; and each Director has taken all the steps that they ought to have taken as a Director to make themselves aware of any relevant audit information and to establish that the syndicate's auditor is aware of that information.

## Auditor

Pursuant to Section 14(2) of Schedule 1 of the Insurance Accounts Directive (Lloyd's Syndicate and Aggregate Accounts) Regulations 2008, the auditor will be deemed to be reappointed and Ernst & Young LLP will therefore continue in office.

On behalf of the Board



S M Lake

Finance Director

2 March 2022

# Statement of managing agent's responsibilities

---

The Insurance Accounts Directive (Lloyd's Syndicate and Aggregate Accounts) Regulations 2008 requires the Directors of the managing agent to prepare their syndicates annual accounts for each financial year. Under that law they have elected to prepare the annual accounts in accordance with UK Accounting Standards and applicable law (UK Generally Accepted Accounting Practice), including FRS 102 The Financial Reporting Standard applicable in the UK and Republic of Ireland.

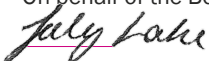
Under Insurance Accounts Directive (Lloyd's Syndicate and Aggregate Accounts) Regulations 2008 the Directors of the managing agent must not approve the annual accounts unless they are satisfied that they give a true and fair view of the state of affairs of the syndicate and of the profit or loss of the syndicate for that period. In preparing these financial statements, the Directors of the managing agent are required to:

- select suitable accounting policies and then apply them consistently;
- make judgements and estimates that are reasonable and prudent;
- state whether applicable UK Accounting Standards have been followed, subject to any material departures disclosed and explained in the annual accounts;
- assess the syndicate's ability to continue as a going concern, disclosing, as applicable, matters related to going concern; and
- use the going concern basis of accounting unless they either intend to cease trading, or have no realistic alternative but to do so.

The Directors of the managing agent are responsible for keeping adequate accounting records that are sufficient to show and explain the syndicate's transactions and disclose with reasonable accuracy at any time the financial position of the syndicate and enable them to ensure that the financial statements comply with the Insurance Accounts Directive (Lloyd's Syndicate and Aggregate Accounts) Regulations 2008. They are responsible for such internal control as they determine is necessary to enable the preparation of financial statements that are free from material misstatement, whether due to fraud or error and have general responsibility for taking such steps as are reasonably open to them to safeguard the assets of the company and to prevent and detect fraud and other irregularities.

The Directors of the managing agent are responsible for the maintenance and integrity of the syndicate and financial information included on the managing agents website. Legislation in the UK governing the preparation and dissemination of financial statements may differ from legislation in other jurisdictions.

On behalf of the Board



**S M Lake**

**Finance Director**

**2 March 2022**



# Independent auditor's report to the members of Syndicate 5623

---

## Opinion

We have audited the syndicate annual accounts of syndicate 5623 ('the syndicate') for the year ended 31 December 2021 which comprise the Statement of comprehensive income, the Balance sheet, the Cash flow statement, the Statement of changes in members' balances and the related notes 1 to 14, including a summary of significant accounting policies. The financial reporting framework that has been applied in their preparation is applicable law and United Kingdom Accounting Standards including FRS 102 'The Financial Reporting Standard applicable in the UK and Republic of Ireland' and FRS 103 'Insurance Contracts' (United Kingdom Generally Accepted Accounting Practice).

In our opinion, the syndicate annual accounts:

- give a true and fair view of the syndicate's affairs as at 31 December 2021 and of its profit for the year then ended;
- have been properly prepared in accordance with United Kingdom Generally Accepted Accounting Practice; and
- have been prepared in accordance with the requirements of The Insurance Accounts Directive (Lloyd's Syndicate and Aggregate Accounts) Regulations 2008.

## Basis for opinion

We conducted our audit in accordance with International Standards on Auditing (UK) (ISAs (UK)) and applicable law. Our responsibilities under those standards are further described in the Auditor's responsibilities for the audit of the syndicate annual accounts section of our report. We are independent of the syndicate in accordance with the ethical requirements that are relevant to our audit of the syndicate annual accounts in the UK, including the FRC's Ethical Standard as applied to other entities of public interest, and we have fulfilled our other ethical responsibilities in accordance with these requirements.

We believe that the audit evidence we have obtained is sufficient and appropriate to provide a basis for our opinion.

## Conclusions relating to going concern

In auditing the syndicate annual accounts, we have concluded that the managing agent's use of the going concern basis of accounting in the preparation of the syndicate annual accounts is appropriate.

Based on the work we have performed, we have not identified any material uncertainties relating to events or conditions that, individually or collectively, may cast significant doubt on the syndicate's ability to continue as a going concern for a period of 12 months from when the syndicate annual accounts are authorised for issue.

Our responsibilities and the responsibilities of the managing agent with respect to going concern are described in the relevant sections of this report. However, because not all future events or conditions can be predicted, this statement is not a guarantee as to the syndicate's ability to continue as a going concern.

## Other information

The other information comprises the information included in the annual report, other than the syndicate annual accounts and our auditor's report thereon. The directors of the managing agent are responsible for the other information contained within the annual report.

Our opinion on the syndicate annual accounts does not cover the other information and, except to the extent otherwise explicitly stated in this report, we do not express any form of assurance conclusion thereon.

Our responsibility is to read the other information and, in doing so, consider whether the other information is materially inconsistent with the syndicate annual accounts or our knowledge obtained in the course of the audit or otherwise appears to be materially misstated. If we identify such material inconsistencies or apparent material misstatements, we are required to determine whether this gives rise to a material misstatement in the syndicate annual accounts themselves. If, based on the work we have performed, we conclude that there is a material misstatement of the other information, we are required to report that fact.

We have nothing to report in this regard.



## Opinions on other matters prescribed by The Insurance Accounts Directive (Lloyd's Syndicate and Aggregate Accounts) Regulations 2008

In our opinion, based on the work undertaken in the course of the audit:

- the information given in the managing agent's report for the financial year in which the syndicate annual accounts are prepared is consistent with the syndicate annual accounts; and
- the managing agent's report has been prepared in accordance with applicable legal requirements.

## Matters on which we are required to report by exception

In light of the knowledge and understanding of the syndicate and its environment obtained in the course of the audit, we have not identified material misstatements in the managing agent's report.

We have nothing to report in respect of the following matters where The Insurance Accounts Directive (Lloyd's Syndicate and Aggregate Accounts) Regulations 2008 requires us to report to you, if in our opinion:

- the managing agent in respect of the syndicate has not kept adequate accounting records; or
- the syndicate annual accounts are not in agreement with the accounting records; or
- certain disclosures of the managing agents' emoluments specified by law are not made; or
- we have not received all the information and explanations we require for our audit.

## Responsibilities of the managing agent

As explained more fully in the Statement of Managing Agent's Responsibilities set out on page 11, the managing agent is responsible for the preparation of the syndicate annual accounts and for being satisfied that they give a true and fair view, and for such internal control as the managing agent determines is necessary to enable the preparation of the syndicate annual accounts that are free from material misstatement, whether due to fraud or error.

In preparing the syndicate annual accounts, the managing agent is responsible for assessing the syndicate's ability to continue in operation, disclosing as applicable, matters related to its ability to continue in operation and using the going concern basis of accounting unless the managing agent either intends to cease to operate the syndicate, or has no realistic alternative but to do so.

## Auditor's responsibilities for the audit of the syndicate annual accounts

Our objectives are to obtain reasonable assurance about whether the syndicate annual accounts as a whole are free from material misstatement, whether due to fraud or error, and to issue an auditor's report that includes our opinion. Reasonable assurance is a high level of assurance, but is not a guarantee that an audit conducted in accordance with ISAs (UK) will always detect a material misstatement when it exists. Misstatements can arise from fraud or error and are considered material if, individually or in the aggregate, they could reasonably be expected to influence the economic decisions of users taken on the basis of these syndicate annual accounts.

## *Explanation as to what extent the audit was considered capable of detecting irregularities, including fraud*

Irregularities, including fraud, are instances of non-compliance with laws and regulations. We design procedures in line with our responsibilities, outlined above, to detect irregularities, including fraud. The risk of not detecting a material misstatement due to fraud is higher than the risk of not detecting one resulting from error, as fraud may involve deliberate concealment by, for example, forgery or intentional misrepresentations, or through collusion.

The extent to which our procedures are capable of detecting irregularities, including fraud, is detailed below. However, the primary responsibility for the prevention and detection of fraud rests with both those charged with governance of the managing agent and management.

# Independent auditor's report to the members of Syndicate 5623

## *continued*

---

Our approach was as follows:

- We obtained a general understanding of the legal and regulatory frameworks that are applicable to the syndicate and determined that the most significant are direct laws and regulations related to elements of Lloyd's Byelaws and Regulations, and the financial reporting framework (UK GAAP), and requirements referred to by Lloyd's in the instructions. Our considerations of other laws and regulations that may have a material effect on the syndicate annual accounts included permissions and supervisory requirements of Lloyd's of London, the Prudential Regulation Authority ('PRA') and the Financial Conduct Authority ('FCA').
- We obtained a general understanding of how the syndicate is complying with those frameworks by making enquiries of management, internal audit, and those responsible for legal and compliance matters of the syndicate. In assessing the effectiveness of the control environment, we also reviewed significant correspondence between the syndicate, Lloyd's of London and other UK regulatory bodies; reviewed minutes of the Board and Risk Committee of the managing agent; and gained an understanding of the managing agent's approach to governance.
- For direct laws and regulations, we considered the extent of compliance with those laws and regulations as part of our procedures on the related syndicate annual accounts' items.
- For both direct and other laws and regulations, our procedures involved: making enquiries of the directors of the managing agent and senior management for their awareness of any non-compliance of laws or regulations, enquiring about the policies that have been established to prevent non-compliance with laws and regulations by officers and employees, enquiring about the managing agent's methods of enforcing and monitoring compliance with such policies, and inspecting significant correspondence with Lloyd's, the FCA and the PRA.
- The syndicate operates in the insurance industry which is a highly regulated environment. As such the Senior Statutory Auditor considered the experience and expertise of the engagement team to ensure that the team had the appropriate competence and capabilities, which included the use of specialists where appropriate.
- We assessed the susceptibility of the syndicate's annual accounts to material misstatement, including how fraud might occur by considering the controls that the managing agent has established to address risks identified by the managing agent, or that otherwise seek to prevent, deter or detect fraud. We also considered areas of significant judgement, including complex transactions, performance targets and external pressures and the impact these have on the control environment. Where this risk was considered to be higher, we performed audit procedures to address each identified fraud risk including:
  - Reviewing accounting estimates for evidence of management bias. Supported by our Actuaries, we assessed if there were any indicators of management bias in the valuation of insurance liabilities and the recognition of estimated premium income.
  - Evaluating the business rationale for significant and/or unusual transactions.

These procedures included testing manual journals and were designed to provide reasonable assurance that the Annual Accounts were free from fraud or error.

A further description of our responsibilities for the audit of financial statements is located on the Financial Reporting Council's website at <https://www.frc.org.uk/auditorsresponsibilities>. This description forms part of our auditor's report.

### Use of our report

This report is made solely to the syndicate's members, as a body, in accordance with The Insurance Accounts Directive (Lloyd's Syndicate and Aggregate Accounts) Regulations 2008. Our audit work has been undertaken so that we might state to the syndicate's members those matters we are required to state to them in an auditor's report and for no other purpose. To the fullest extent permitted by law, we do not accept or assume responsibility to anyone other than the syndicate and the syndicate's members as a body, for our audit work, for this report, or for the opinions we have formed.



**Stuart Wilson (Senior statutory auditor)**

for and on behalf of Ernst & Young LLP, Statutory Auditor  
London

3 March 2022

# Statement of comprehensive income

for the year ended 31 December 2021

	Notes	2021 \$'000	2020 \$'000
Gross premiums written		161,111.2	86,075.0
Change in the gross provision for unearned premiums	10	(37,980.1)	(25,102.6)
<b>Earned premiums</b>		<b>123,131.1</b>	<b>60,972.4</b>
Allocated investment return transferred from the non-technical account		853.8	961.6
Gross claims paid		(10,815.3)	(6,236.9)
Change in the gross provision for claims		(81,819.6)	(41,687.1)
<b>Claims incurred</b>		<b>(92,634.9)</b>	<b>(47,924.0)</b>
<b>Net operating expenses</b>	4	<b>(29,991.3)</b>	<b>(15,414.7)</b>
<b>Balance on the technical account</b>		<b>1,358.7</b>	<b>(1,404.7)</b>
Investment income	5	853.8	961.6
Allocated investment return transferred to general business technical account		(853.8)	(961.6)
Gain/(loss) on foreign exchange		193.9	(396.3)
Other charges	6	-	(231.2)
<b>Profit/(loss) for the financial year</b>		<b>1,552.6</b>	<b>(2,032.2)</b>

All of the above operations are continuing.

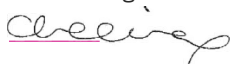
# Balance sheet

as at 31 December 2021

	Notes	2021 \$'000	2020 \$'000
<b>Assets</b>			
<b>Debtors</b>			
Debtors arising out of reinsurance operations		69,121.1	28,690.0
Other debtors	7	124,336.4	59,632.3
		<b>193,457.5</b>	<b>88,322.3</b>
<b>Cash at bank and in hand</b>	8	<b>3,786.3</b>	-
<b>Deferred acquisition costs</b>	13	<b>21,356.5</b>	<b>11,237.0</b>
<b>Total assets</b>		<b>218,600.3</b>	<b>99,559.3</b>
<b>Liabilities, capital and reserves</b>			
<b>Capital and reserves</b>			
Members' balances attributable to underwriting participations		(2,186.3)	(2,760.7)
<b>Technical provisions</b>			
Provision for unearned premiums	10	81,336.2	43,595.2
Claims outstanding	10	139,364.9	58,696.0
		<b>220,701.1</b>	<b>102,291.2</b>
<b>Creditors</b>			
Other creditors	9	85.5	28.8
		<b>85.5</b>	<b>28.8</b>
<b>Total liabilities, capital and reserves</b>		<b>218,600.3</b>	<b>99,559.3</b>

The notes on pages 18 to 30 form part of these financial statements.

The syndicate annual accounts on pages 15 to 30 were approved by the Board of Beazley Furlonge Limited on 2 March 2022 and were signed on its behalf by:



**A P Cox**

Active Underwriter



**S M Lake**

Finance Director

# Cash flow statement

for the year ended 31 December 2021

	2021 \$'000	2020 \$'000
<b>Reconciliation of comprehensive income/(loss) for the financial year to net cash flows from operating activities</b>		
Profit/(loss) in the year	1,552.6	(2,032.2)
Increase in gross technical provisions	118,409.9	67,537.7
Increase in deferred acquisition costs	(10,119.5)	(5,568.0)
Increase in debtors	(105,135.2)	(59,966.3)
Increase in creditors	56.7	28.8
Investment return	(853.8)	961.6
<b>Net cash generated from operating activities</b>	<b>3,910.7</b>	<b>961.6</b>
Cash received from investment return	853.8	(961.6)
<b>Net cash from investing activities</b>	<b>853.8</b>	<b>(961.6)</b>
Transfer to member in respect of underwriting participations	(978.2)	-
<b>Net cash used in financing activities</b>	<b>(978.2)</b>	<b>-</b>
<b>Net increase in cash and cash equivalents</b>	<b>3,786.3</b>	<b>-</b>
Cash and cash equivalents at the beginning of the year	-	-
Effect of exchange rate changes on cash and cash equivalents	-	-
<b>Cash and cash equivalents at the end of the year</b>	<b>3,786.3</b>	<b>-</b>

# Statement of changes in members' balances

at 31 December 2021

	2021 \$'000	2020 \$'000
Members' balances brought forward at 1 January	(2,760.7)	(728.5)
Total comprehensive Income/(loss) for the financial year	1,552.6	(2,032.2)
<b>Profit distribution before members agent's fees - 2018 year of account</b>	<b>(978.2)</b>	<b>-</b>
<b>Members' balances carried forward at 31 December</b>	<b>(2,186.3)</b>	<b>(2,760.7)</b>

The notes on pages 18 to 30 form part of these financial statements.

Members participate on the syndicates by reference to years of account 'YOA' and their ultimate result, assets and liabilities are assessed with reference to policies incepting in that year of account in respect of their membership of a particular year.

# Notes to the syndicate annual accounts

---

## 1 Accounting policies

### Basis of preparation

Syndicate 5623 (the 'syndicate') comprises a group of members of the Society of Lloyd's that underwrites reinsurance business in the London Market. The address of the syndicate's managing agent is given on page 46.

These syndicate annual accounts have been prepared in accordance with the Insurance Accounts Directive (Lloyd's Syndicate and Aggregate Accounts) Regulations 2008 ('the Regulations') and applicable Accounting Standards in the United Kingdom and the Republic of Ireland, Financial Reporting Standard 102 'FRS 102' and the applicable Accounting Standard on insurance contracts, Financial Reporting Standard 103 'FRS 103'.

The financial statements have been prepared on the historic cost basis, except for financial assets at fair value through profit or loss that are measured at fair value. The principal accounting policies applied in the preparation of these syndicate annual accounts are set out below. The policies have been consistently applied to all periods presented, unless otherwise stated. All amounts presented are stated in US dollars, being the syndicate's functional currency, and in thousands, unless noted otherwise.

The financial statements of the syndicate have been prepared on a going concern basis. The syndicate's business activities, together with the factors likely to affect its future development, performance and position, are set out in the Strategic report contained in the annual report. In addition, the Strategic report includes the syndicate's risk management objectives and the entity's objectives, policies and processes for managing its capital.

In assessing the syndicate's going concern position as at 31 December 2021, the directors have considered a number of factors, including the current statement of financial position and the syndicate's strategic and financial plan. The assessment concluded that, for the foreseeable future, the syndicate has sufficient capital and liquidity for the 12 months from the date financial statement are authorised for issue.

### Use of estimates and judgements

The preparation of financial statements requires the use of certain critical accounting estimates and judgements that affect the reported amounts of assets, liabilities, income and expenses. Actual results may differ from those on which management's estimates are based. Estimates and assumptions are continually evaluated and are based on historical experience and other factors, including expectations of future events that are believed to be reasonable. Estimates which are sensitive to changes in future economic conditions could be impacted by significant changes in the economic and regulatory environment, such as COVID-19, climate change, US legislation and Brexit.

Specific to climate change, since responses to it are still developing, it is not possible to consider all possible future outcomes when determining asset and liability valuations, and timing of future cash flows, as these are not yet known. Nevertheless, the current management view is that reasonably possible changes arising from climate risks would not have a material impact on asset and liability valuations at the year-end date.

Estimates and underlying assumptions are reviewed on an ongoing basis. Revisions to accounting estimates are recognised in the period in which the estimate is revised and in any future periods affected.

The most critical estimate included within the syndicate's financial position is the estimate for losses incurred but not reported ('IBNR'), which is included within total technical provisions and reinsurers' share of technical provisions in the balance sheet and note 10. This estimate is critical as it outlines the current liability for future expenses expected to be incurred in relation to claims. If this estimation was to prove inadequate then an exposure would arise in future years where a liability has not been provided for. The total estimate as at 31 December 2021 included within claims outstanding on the balance sheet is \$114,783.4k (2020: \$50,871.8k).

## 1 Accounting policies *continued*

Other key estimates contained within the syndicate close process are premium estimates and the earning pattern of recognising premium over the life of the contract. In the syndicate the premium written is initially based on the estimated premium income ('EPI') of each contract. Where premium is sourced through binders, the binder EPI is pro-rated across the binder period. This is done on a straight-line basis unless the underlying writing pattern from the prior period indicates the actual underlying writing pattern is materially different. The underwriters adjust their EPI estimates as the year of account matures. As the year of account closes premiums are adjusted to match the actual/expected signed premium for long tail classes. An accrual for estimated future reinstatement premiums is retained. Premiums are earned on a straight-line basis over the life of each contract. At a portfolio level this is considered to provide a reasonable estimate for the full year of the pattern of risk over the coverage period.

Due to the nature of Lloyd's business and the settlement patterns of the underlying business it is also not uncommon for some contracts to take a number of years to finalise and settle, and as such remain a receivable on the balance sheet. The amount of estimated future premium that remains in insurance receivables relating to years of account that are more than three years developed at 31 December 2021 is \$30.8k (2020: \$nil).

### Significant accounting policies

The financial statements have been prepared on an annual basis of accounting, whereby the incurred cost of claims, commission and related expenses are charged against the earned proportion of premiums, net of reinsurance as follows:

#### *a) Premiums*

Gross premiums written comprise premiums on contracts inception during the financial year. Gross premiums are stated before deduction of brokerage, taxes and duties levied on them. Estimates are made for pipeline premiums, representing amounts due to the syndicate not yet notified, as well as adjustments made in the year to premiums written in prior accounting periods.

#### *b) Unearned premiums*

A provision for unearned premiums represents the part of the gross premiums written that is estimated will be earned in the following or subsequent financial periods. It is calculated using the daily pro rata method, adjusted if necessary to reflect any variation in the incidence of risk during the period covered by the contract.

#### *c) Claims*

Claims incurred represent the cost of claims and claims handling expenses paid during the financial year, together with the movement in provisions for outstanding claims, claims incurred but not reported (IBNR) and future claims handling provisions. The provision for claims comprises amounts set aside for claims advised and IBNR.

The IBNR amount is based on estimates calculated using widely accepted actuarial techniques (e.g. chain ladder) which are reviewed quarterly by the group actuary and annually by external actuaries. The techniques generally use projections based on past experience of the development of claims over time, to form a view on the likely ultimate claims to be experienced, however as this is only the fourth year of operation for this syndicate, loss ratio driven methods have been used to set a margin above the best estimate in line with UK GAAP requirements.

#### *d) Liability adequacy testing*

At each reporting date, liability adequacy tests are performed to ensure the adequacy of the claims liabilities net of deferred acquisition costs (DAC) and unearned premium reserves. In performing these tests, current best estimates of future contractual cash flows, claims handling and administration expenses as well as investment income from the assets backing such liabilities are used.

Any deficiency is immediately charged to the statement of comprehensive income by establishing an unexpired risk reserve ('URR') provision for losses arising from liability adequacy tests. There is currently no unexpired risk provision.

# Notes to the syndicate annual accounts

## *continued*

---

### 1 Accounting policies *continued*

#### *e) Acquisition costs*

Acquisition costs comprise brokerage and premium levy. The proportion of acquisition costs in respect of unearned premiums is deferred at the balance sheet date and recognised in later periods when the related premiums are earned.

#### *f) Foreign currencies*

Foreign currency transactions are translated into the functional currency using average exchange rates applicable to the period in which the transactions take place and where the syndicate considers these to be a reasonable approximation of the transaction rate. Foreign exchange gains and losses resulting from the settlement of such transactions and from translation at the period end of monetary assets and liabilities denominated in foreign currencies are recognised in the statement of comprehensive income. Non-monetary items recorded at historical cost in foreign currencies are translated in the statement of comprehensive income using the average rates, and the spot rate is used for the balance sheet.

#### *g) Taxation*

Under Schedule 19 of the Finance Act 1993 managing agents are not required to deduct basic rate income tax from trading income. In addition, all UK basic rate income tax (currently at 20%) deducted from syndicate investment income is recoverable by managing agents and consequently the distribution made to members or their members' agents is gross of tax. Capital appreciation falls within trading income and is also distributed gross of tax.

No provision has been made for any US Federal Income Tax payable on underwriting results or investment earnings. Any payments on account made by the syndicate during the year have been included in the balance sheet under the heading 'other debtors'.

No provision has been made for any other overseas tax payable by members on underwriting results.

#### *h) Profit commission*

Profit commission is charged by the ceding syndicate 3623 at a rate of 20% of the profit after an expense allowance on a year of account basis subject to the operating of a two-year deficit clause. This is charged to the syndicate as incurred but does not become payable until after the appropriate year of account closes, normally at 36 months.

#### *i) Insurance debtors and creditors*

Insurance debtors and creditors are recognised when due. These include amounts due to and from the host syndicate. These are classified as insurance debtors and creditors as they are non-derivative financial assets with fixed or determinable payments that are not quoted on an active market. Insurance debtors are measured at amortised cost less any provision for impairments. Insurance creditors are stated at amortised cost less any impairment losses.

#### *j) Cash at bank and in hand*

This consists of cash at bank and in hand and deposits held at call with banks.

#### *k) Other debtors*

Other debtors principally consist of intercompany debtor balances and sundry debtors and are carried at amortised cost less any impairment losses.

#### *l) Other creditors*

Other creditors are stated at amortised cost determined on the effective interest rate method.

#### *m) Investment return*

Investment return consists of the syndicate's share of the host syndicate's investment return.

Investment return is initially recorded in the non-technical account. A transfer is made from the non-technical account to the general business technical account to reflect the investment return on funds supporting underwriting business.



## 2 Risk management

The syndicate has identified the risks arising from its activities and has established policies and procedures to manage these items in accordance with its risk appetite. The sections below outline the syndicate's risk appetite and explain how it defines and manages each category of risk.

### 2.1 Insurance risk

The syndicate's insurance business assumes the risk of loss from persons or organisations that are directly exposed to an underlying loss. Insurance risk arises from this risk transfer due to inherent uncertainties about the occurrence, amount and timing of insurance liabilities. The three key components of insurance risk are underwriting, claims management and reserving. Each element is considered below:

#### *a) Underwriting risk*

Underwriting risk comprises four elements that apply to all insurance products offered by the syndicate:

- cycle risk – the risk that business is written without full knowledge as to the (in)adequacy of rates, terms and conditions;
- event risk – the risk that individual risk losses or catastrophes lead to claims that are higher than anticipated in plans and pricing;
- pricing risk – the risk that the level of expected loss is understated in the pricing process; and
- expense risk – the risk that the allowance for expenses and inflation in pricing is inadequate.

The annual business plans for the underwriting team reflect the syndicate's underwriting strategy, and set out the classes of business, the territories and the industry sectors in which business is to be written. These plans are approved by the board of Beazley Furlonge Limited and monitored by the underwriting committee.

The syndicate's underwriters calculate premiums for risks written based on a range of criteria tailored specifically to each individual facility. These factors include but are not limited to the financial exposure, loss history, risk characteristics, limits, deductibles, terms and conditions and acquisition expenses.

The syndicate also recognises that insurance events are, by their nature, random, and the actual number and size of events during any one year may vary from those estimated using established statistical techniques.

To address this, the syndicate sets out the exposure that it is prepared to accept in certain territories to a range of events such as natural catastrophes and specific scenarios which may result in large industry losses. This is monitored through regular calculation of RDS. The aggregate position is monitored at the time of underwriting a risk, and reports are regularly produced to highlight the key aggregations to which the syndicate is exposed.

The syndicate uses a number of modelling tools to monitor its exposures against the agreed risk appetite set and to simulate catastrophe losses. Stress and scenario tests are also run using these models. The range of scenarios considered includes natural catastrophe, cyber, marine, liability, political, terrorism and war events.

One of the largest types of event exposure relates to natural catastrophe events such as windstorm or earthquake. With the increasing risk from climate change impacts the frequency and severity of natural catastrophes, the managing agent continues to monitor its exposure. Where possible the syndicate measures geographic accumulations and uses its knowledge of the business, historical loss behaviour and commercial catastrophe modelling software to assess the expected range of losses at different return periods. The key gross exposures are calculated on the basis of extreme events at a range of return periods.

To manage underwriting exposures, the host syndicate has developed limits of authority and business plans which are binding upon all staff authorised to underwrite and are specific to underwriters, classes of business and industry. In 2021, the absolute maximum line that any one underwriter could commit the host syndicate to was \$21.2m (2020: absolute maximum line \$16.2m). In most cases, maximum lines for classes of business were much lower than this.

These authority limits are enforced through a comprehensive sign-off process for underwriting transactions including dual sign-off for all line underwriters and peer review for all risks exceeding individual underwriters authority limits. Exception reports are also run regularly to monitor compliance.

# Notes to the syndicate annual accounts

## *continued*

### 2 Risk management *continued*

#### Binding authority contracts

A proportion of the host syndicate's insurance risks are transacted by third parties under delegated underwriting authorities. Each third party is thoroughly vetted by our coverholder approval group before it can bind risks, and is subject to rigorous monitoring to maintain underwriting quality and confirm ongoing compliance with contractual guidelines.

#### *b) Claims management risk*

Claims management risk may arise within the syndicate in the event of inaccurate or incomplete claims reporting for facilities underwritten. As a follow syndicate which delegates claims authority to approved brokers, consortia or coverholders, the syndicate relies on accurate claims reporting from third parties.

The host syndicate's claims teams are focused on delivering quality, reliability and speed of service to both internal and external clients. Their aim is to adjust and process claims in a fair, efficient and timely manner, in accordance with the policy's terms and conditions, the regulatory environment, and the business's broader interests. Case reserves are set for all known claims liabilities, including provisions for expenses, as soon as a reliable estimate can be made of the claims liability.

#### *c) Reserving and ultimate reserves risk*

Reserving and ultimate reserves risk occurs within the syndicate where established insurance liabilities are insufficient through inaccurate forecasting, or where there is inadequate allowance for expenses and bad debt in provisions.

To manage reserving and ultimate reserves risk, our actuarial team uses a range of recognised techniques to project gross premiums written, monitor claims development patterns and stress test ultimate insurance liability balances. An external independent actuary also performs an annual review to produce a statement of actuarial opinion for the syndicate.

The objective of the syndicate's reserving policy is to produce accurate and reliable estimates that are consistent over time and across classes of business, while also holding reserves with margin above best estimate claims to help mitigate future adverse claims experience. The estimates of gross premiums written and claims prepared by the actuarial department are used through a formal quarterly peer review process to independently test the integrity of the estimates produced by the underwriting teams for each class of business. These meetings are attended by senior management, senior underwriters, actuarial, claims, and finance representatives.

A five percent increase or decrease in total claims liabilities would have the following effect on profit or loss and equity:

	5% increase in net claims reserves		5% decreases in net claims reserves	
	2021 \$'000	2020 \$'000	2021 \$'000	2020 \$'000
<b>Sensitivity to insurance risk (claims reserves)</b>				
<b>Impact on profit and equity</b>	<b>(6,968.2)</b>	<b>(2,934.8)</b>	<b>6,968.2</b>	<b>2,934.8</b>

The syndicate also monitors its exposure to insurance risk by location. The below table provides an analysis of the geographical breakdown of its written premiums.

	2021 %	2020 %
US	6	6
Europe <sup>1</sup>	13	11
Other	81	83
	<b>100</b>	<b>100</b>

1 Includes UK.

## 2 Risk management *continued*

### 2.2 Financial risk

The focus of financial risk management for the host syndicate is ensuring that the proceeds from its financial assets are sufficient to fund the obligations arising from its insurance contracts. The goal of the investment management process of the host syndicate is to optimise the risk-adjusted investment income and risk-adjusted total return by investing in a diversified portfolio of securities, whilst ensuring that the assets and liabilities are managed on a cash flow and duration basis.

### 2.3 Strategic risk

This is the risk that Beazley Furlonge Limited's strategy is inappropriate or that Beazley Furlonge Limited is unable to implement its strategy. Where events supersede the strategic plan this is escalated at the earliest opportunity through Beazley Furlonge Limited's monitoring tools and governance structure.

### Senior management responsibilities

Management stretch is the risk that business growth might result in an insufficient or overly complicated management team structure, thereby undermining accountability and control within the syndicate. As the syndicate expands its worldwide business in the UK, North America, Europe, South America and Asia, management stretch may make the identification, analysis and control of risks more complex. On a day-to-day basis, Beazley Furlonge Limited's management structure encourages organisational flexibility and adaptability, while ensuring that activities are appropriately coordinated and controlled. By focusing on the needs of their customers and demonstrating both progressive and responsive abilities, staff, management and outsourced service providers are expected to excel in service and quality. Individuals and teams are also expected to transact their activities in an open and transparent way.

These behavioural expectations reaffirm low risk tolerance by aligning interests to ensure that routine activities, projects and other initiatives are implemented to benefit and protect resources of both local business segments and the syndicate as a whole.

### 2.4 Market risk

Market risk arises where the value of assets and liabilities changes as a result of movements in foreign exchange rates, interest rates and market prices.

#### *Foreign exchange risk*

The functional currency of the syndicate is US dollars and the presentation currency in which the syndicate reports its results is US dollars. The effect of this on foreign exchange risk is that the syndicate is exposed to fluctuations in exchange rates for non-dollar denominated transactions and net assets.

The syndicate has four main settlement currencies: US dollars, sterling, Canadian dollars and euro. Transactions in all currencies are converted to US dollars on initial recognition and revalued at the reporting date. Remaining foreign exchange risk is actively managed as described below.

The syndicate's assets are broadly matched by currency to the principal underlying settlement currencies of its insurance liabilities. This helps mitigate the risk that future movements in exchange rates would materially impact the syndicate's assets required to cover its insurance liabilities.

The following table summarises the carrying value of total assets and total liabilities categorised by currency:

	UK £ \$'000	CAD \$ \$'000	EUR € \$'000	Subtotal \$'000	US \$ \$'000	Total \$'000
<b>31 December 2021</b>						
Total assets	18,788.9	4,350.7	7,893.1	31,032.7	187,567.6	218,600.3
Total liabilities	(19,662.0)	(3,328.5)	(9,800.6)	(32,791.1)	(187,995.5)	(220,786.6)
<b>Net assets</b>	<b>(873.1)</b>	<b>1,022.2</b>	<b>(1,907.5)</b>	<b>(1,758.4)</b>	<b>(427.9)</b>	<b>(2,186.3)</b>
<b>31 December 2020</b>						
Total assets	10,755.2	3.5	(576.4)	10,182.3	89,377.0	99,559.3
Total liabilities	(7,050.3)	(1,713.5)	(3,824.4)	(12,588.2)	(89,731.8)	(102,320.0)
<b>Net assets</b>	<b>3,704.9</b>	<b>(1,710.0)</b>	<b>(4,400.8)</b>	<b>(2,405.9)</b>	<b>(354.8)</b>	<b>(2,760.7)</b>

# Notes to the syndicate annual accounts

## *continued*

### 2 Risk management *continued*

Fluctuations in the syndicate's trading currencies against the US dollar would result in a change to profit and to net asset value. The table below gives an indication of the impact on profit and net assets of a percentage change in relative strength of US dollar against the value of sterling, Canadian dollar and euro, simultaneously. The analysis is based on the current information available and an assumption that the impact of foreign exchange on non-monetary items will be nil.

	Impact on profit for the year ended		Impact on net assets	
	2021 \$'000	2020 \$'000	2021 \$'000	2020 \$'000
<b>Change in exchange rate of sterling, Canadian dollar and euro relative to US dollar</b>				
Dollar weakens 30% against other currencies	(527.5)	(721.8)	(527.5)	(721.8)
Dollar weakens 20% against other currencies	(351.7)	(481.2)	(351.7)	(481.2)
Dollar weakens 10% against other currencies	(175.8)	(240.6)	(175.8)	(240.6)
Dollar strengthens 10% against other currencies	175.8	240.6	175.8	240.6
Dollar strengthens 20% against other currencies	351.7	481.2	351.7	481.2
Dollar strengthens 30% against other currencies	527.5	721.8	527.5	721.8

#### *Interest rate risk*

The syndicate has no material interest rate risk.

#### *Price risk*

This is not a material risk to the syndicate.

#### 2.5 Operational risk

Operational risk arises from the risk of losses due to inadequate or failed internal processes, people, systems, service providers or from external events.

There are a number of business activities for which the host syndicate uses the services of a third-party company, such as data entry and credit control. These service providers are selected against rigorous criteria and formal service level agreements are in place, and regularly monitored and reviewed.

Beazley Furlonge Limited also recognises that it is necessary for people, systems and infrastructure to be available to support the syndicate's operations and has therefore taken significant steps to mitigate the impact of business interruption which could follow a variety of events, including the loss of key individuals and facilities. The syndicate operates a formal disaster recovery plan which, in the event of an incident, allows the movement of critical operations to an alternative location within 24 hours.

Beazley Furlonge Limited actively manages operational risks and minimises them where appropriate. This is achieved by implementing and communicating guidelines to staff and other third parties. Beazley Furlonge Limited also regularly monitors the performance of its controls and adherence to these guidelines through the risk management reporting process.

Key components of Beazley Furlonge Limited's operational control environment include:

- Solvency capital requirement 'SCR' modelling of operational risk exposure and scenario testing;
- management review of activities;
- documentation of policies and procedures;
- preventative and detective controls within key processes;
- contingency planning; and
- other systems controls.

## 2 Risk management *continued*

### 2.6 Credit risk

Credit risk arises from the failure of another party to perform its financial or contractual obligations to the syndicate in a timely manner. The primary sources of credit risk for the syndicate are:

- brokers and coverholders – whereby counterparties fail to pass on premiums or claims collected or paid on behalf of the host syndicate; and
- investments – whereby issuer default results in the host syndicate losing all or part of the value of a financial instrument and derivative financial instrument.

The syndicate's core business is to accept significant insurance risk and the appetite for other risks is low. This protects the syndicate's capital from erosion so that it can meet its insurance liabilities.

The host syndicate limits exposure to a single counterparty or a group of counterparties and analyses the geographical locations of exposures when assessing credit risk.

An approval system also exists in the host syndicate for all new brokers, and broker performance is carefully monitored. Regular exception reports highlight trading with non-approved brokers, and the host syndicate's credit control function frequently assesses the ageing and collectability of debtor balances. Any large, aged items are prioritised and where collection is outsourced, incentives are in place to support these priorities.

To assist in the understanding of credit risks, A.M. Best, Moody's and Standard & Poor's (S&P) ratings are used. These ratings have been categorised below as used for Lloyd's reporting:

	A.M. Best	Moody's	S&P
Tier 1	A++ to A-	Aaa to A3	AAA to A-
Tier 2	B++ to B-	Baa1 to Ba3	BBB+ to BB-
Tier 3	C++ to C-	B1 to Caa	B+ to CCC
Tier 4	D,E,F,S	Ca to C	R,(U,S) 3

The following tables summarise the syndicate's concentrations of credit risk:

	Tier 1 \$'000	Tier 2 \$'000	Tier 3 \$'000	Tier 4 \$'000	Unrated \$'000	Total \$'000
31 December 2021						
Reinsurance debtors	69,121.1	-	-	-	-	69,121.1
Cash at bank and in hand	3,786.3	-	-	-	-	3,786.3
<b>Total</b>	<b>72,907.4</b>	<b>-</b>	<b>-</b>	<b>-</b>	<b>-</b>	<b>72,907.4</b>

	Tier 1 \$'000	Tier 2 \$'000	Tier 3 \$'000	Tier 4 \$'000	Unrated \$'000	Total \$'000
31 December 2020						
Reinsurance debtors	28,690.0	-	-	-	-	28,690.0
<b>Total</b>	<b>28,690.0</b>	<b>-</b>	<b>-</b>	<b>-</b>	<b>-</b>	<b>28,690.0</b>

Based on all evidence available, debtors arising out of reinsurance operations have not been impaired and no impairment provision has been recognised in respect of these assets.

The syndicate has no insurance debtors and reinsurance assets that are past due but not impaired at the reporting date.

# Notes to the syndicate annual accounts

## *continued*

---

## 2 Risk management *continued*

### 2.7 Regulatory and legal risk

Regulatory and legal risk is the risk arising from not complying with regulatory and legal requirements. The operations of Beazley Furlonge Limited are subject to legal and regulatory requirements within the jurisdictions in which it operates and Beazley Furlonge Limited's compliance function is responsible for ensuring that these requirements are adhered to.

### 2.8 Liquidity risk

Liquidity risk arises where cash may not be available to pay obligations when due at a reasonable cost. As syndicate 5623 is a special purpose arrangement syndicate, operating on a cash withheld basis for its reinsurance, liquidity risk is managed by the host syndicate.

### 2.9 Capital management

#### *Capital framework at Lloyd's*

The Society of Lloyd's is a regulated undertaking and subject to the supervision of the Prudential Regulatory Authority (PRA) under the Financial Services and Markets Act 2000.

Within this supervisory framework, Lloyd's applies capital requirements at member level and centrally to ensure that Lloyd's complies with Solvency II, and beyond that to meet its own financial strength, licence and ratings objectives.

Although, as described below, Lloyd's capital setting processes use a capital requirement set at syndicate level as a starting point, the requirement to meet Solvency II and Lloyd's capital requirements apply at overall and member level respectively, not at syndicate level. Accordingly the capital requirement in respect of syndicate 5623 is not disclosed in these financial statements.

#### *Lloyd's capital setting process*

In order to meet Lloyd's requirements, each syndicate is required to calculate its Solvency Capital Requirement for the prospective underwriting year. This amount must be sufficient to cover a 1 in 200 year loss, reflecting uncertainty in the ultimate run-off of underwriting liabilities (SCR to ultimate). The syndicate must also calculate its SCR at the same confidence level but reflecting uncertainty over a one year time horizon (one year SCR) for Lloyd's to use in meeting Solvency II requirements. The SCRs of each syndicate are subject to review by Lloyd's and approval by the Lloyd's Capital and Planning Group.

A syndicate comprises one or more underwriting members of Lloyd's. Each member is liable for its own share of underwriting liabilities on the syndicate(s) on which it participates but not other members' shares. Accordingly, the capital requirement that Lloyd's sets for each member operates on a similar basis. Each member's SCR shall thus be determined by the sum of the member's share of the syndicate SCR to ultimate. Where a member participates on more than one syndicate, a credit for diversification is provided to reflect the spread of risk, but consistent with determining an SCR which reflects the capital requirement to cover a 1 in 200 year loss to ultimate for that member. Over and above this, Lloyd's applies a capital uplift to the member's capital requirement, known as the Economic Capital Assessment (ECA). The purpose of this uplift, which is a Lloyd's not a Solvency II requirement, is to meet Lloyd's financial strength, licence and ratings objectives. The capital uplift applied for 2021 was 35% (2020: 35%) of the member's SCR to ultimate.

#### *Provision of capital by members*

Each member may provide capital to meet its ECA either by assets held in trust by Lloyd's specifically for that member (funds at Lloyd's), held within and managed within a syndicate (funds in syndicate) and/or as the member's share of the solvency II members' balances on each syndicate on which it participates.

Accordingly all of the assets less liabilities of the syndicate, as represented in the members' balances reported on the balance sheet on page 16, represent resources available to meet members' and Lloyd's capital requirements.

### 3 Segmental analysis

All business was concluded in the UK and relates to reinsurance.

### 4 Net operating expenses

	2021 \$'000	2020 \$'000
Acquisition costs <sup>1</sup>	33,428.9	16,676.4
Change in deferred acquisition costs	(8,673.9)	(4,376.8)
Administrative expenses	(579.7)	(71.1)
Reinsurance commissions and profit participation	5,816.0	3,186.2
	<b>29,991.3</b>	<b>15,414.7</b>

1 Brokerage and commissions on direct business written was \$nil (2020: \$nil).

Administrative expenses include:

	2021 \$'000	2020 \$'000
Fees payable to the syndicate's auditor for the audit of these annual accounts	84.0	58.6
Fees payable to the syndicate's auditor and its associates in respect of: Other services pursuant to legislation	161.4	144.0
	<b>245.4</b>	<b>202.6</b>

### 5 Net investment income

	2021 \$'000	2020 \$'000
Interest income	853.8	961.6

### 6 Other charges

	2021 \$'000	2020 \$'000
Profit commissions paid to syndicate 3623	-	231.2

### 7 Other debtors

	2021 \$'000	2020 \$'000
Amount due from syndicate 3623	122,952.6	58,776.2
Amount due from members	1,383.8	856.1
	<b>124,336.4</b>	<b>59,632.3</b>

### 8 Cash and cash equivalents

	2021 \$'000	2020 \$'000
Cash at bank and in hand	3,786.3	-

# Notes to the syndicate annual accounts

## *continued*

### 9 Other creditors

	2021 \$'000	2020 \$'000
Net amounts due from other related entities	85.5	28.8
	<b>85.5</b>	<b>28.8</b>

### 10 Technical provisions

	Provision for unearned premium outstanding \$'000	Claims \$'000
<b>Gross technical provisions</b>		
<b>As at 1 January 2021</b>	<b>43,595.2</b>	<b>58,696.0</b>
Movement in the provision	37,980.1	81,819.6
Exchange adjustments	(239.1)	(1,150.7)
<b>As at 31 December 2021</b>	<b>81,336.2</b>	<b>139,364.9</b>

	Provision for unearned premium outstanding \$'000	Claims \$'000
<b>Gross technical provisions</b>		
As at 1 January 2020	18,463.9	16,289.6
Movement in the provision	25,102.6	41,687.1
Exchange adjustments	28.7	719.3
<b>As at 31 December 2020</b>	<b>43,595.2</b>	<b>58,696.0</b>

	2018 %	2019 %	2020 %	2021 %	Total
Gross ultimate claims					
12 months	66.3	72.9	76.6	75.4	
24 months	66.3	73.3	74.6		
36 months	55.1	69.0			
48 months	55.2				
Total ultimate losses (\$'000)	7,300.0	32,800.0	65,700.0	124,300.0	230,100.0
Less paid claims (\$'000)	(3,998.9)	(7,674.3)	(6,261.7)	(684.9)	(18,619.8)
Less unearned portion of ultimate losses (\$'000)	-	(425.4)	(6,740.6)	(64,949.3)	(72,115.3)
<b>Gross claims liabilities (\$'000)</b>	<b>3,301.1</b>	<b>24,700.3</b>	<b>52,697.7</b>	<b>58,665.8</b>	<b>139,364.9</b>

	2018 %	2019 %	2020 %	2021 %	Total
Net ultimate claims					
12 months	66.3	72.9	76.6	75.4	
24 months	66.3	73.3	74.6		
36 months	55.1	69.0			
48 months	55.2				
Total ultimate losses (\$'000)	7,300.0	32,800.0	65,700.0	124,300.0	230,100.0
Less paid claims (\$'000)	(3,998.9)	(7,674.3)	(6,261.7)	(684.9)	(18,619.8)
Less unearned portion of ultimate losses (\$'000)	-	(425.4)	(6,740.6)	(64,949.3)	(72,115.3)
<b>Net claims liabilities (\$'000)</b>	<b>3,301.1</b>	<b>24,700.3</b>	<b>52,697.7</b>	<b>58,665.8</b>	<b>139,364.9</b>



## 11 Related parties transactions

The business written by syndicate 5623 is ceded from syndicate 3623, for which syndicate 5623 pays a profit commission. This profit commission payable is disclosed in note 6 and the override commission is included within operating expenses. The proportion of override commission in respect of unearned premium is deferred at the balance sheet date and recognised in later periods when the related premiums are earned.

The intercompany position with syndicate 3623 at 31 December 2021 is disclosed above in note 7 (other debtors).

Beazley Furlonge Limited, the managing agent of syndicate 5623, is a wholly-owned subsidiary of Beazley plc. The directors of Beazley Furlonge Limited during the period covered by these syndicate annual accounts who participated on syndicate 623, managed by the managing agent, indirectly through Beazley Staff Underwriting Limited are as follows:

£	2020 year of account underwriting capacity	2021 year of account underwriting capacity	2022 year of account underwriting capacity
A P Cox	400,000	400,000	400,000
S M Lake	100,000	100,000	100,000
D A Horton	400,000	400,000	-
A S Pryde	350,000	350,000	-
I Fantozzi	350,000	350,000	350,000
R Anarfi	-	-	100,000

The directors of Beazley Furlonge Limited who held office during the period covered by this report have shareholdings in Beazley plc which provides the capacity for syndicates 2623, 3622 and 3623.

Beazley Furlonge Limited as the managing agent of the syndicate is responsible for settling intercompany balances with other managed syndicates and net amounts due to/from other related entities.

## 12 Foreign exchange rates

The syndicate used the following exchange rates to translate foreign currency assets, liabilities, income and expenses into US dollars, being the syndicate's presentational currency:

	2021		2020	
	Average	Year end spot	Average	Year end spot
Sterling	0.73	0.76	0.78	0.73
Canadian dollars	1.25	1.27	1.34	1.27
Euro	0.84	0.88	0.88	0.81

## 13 Deferred acquisition costs

	2021 \$'000	2020 \$'000
At 1 January	11,237.0	5,669.0
Change in deferred acquisition costs	8,673.9	4,376.8
Change in deferral of overriding commission <sup>1</sup>	1,506.4	1,186.5
Exchange adjustments	(60.8)	4.6
<b>Balance at 31 December</b>	<b>21,356.5</b>	<b>11,237.0</b>

1 Change in deferral of overriding commission has been included within net operating expenses in the profit or loss account.

# Notes to the syndicate annual accounts

## *continued*

---

### 14 Post balance sheet events

Post the balance sheet date, Ukraine has been invaded by Russia which has resulted in war in Eastern Europe. We continue to monitor the situation carefully.

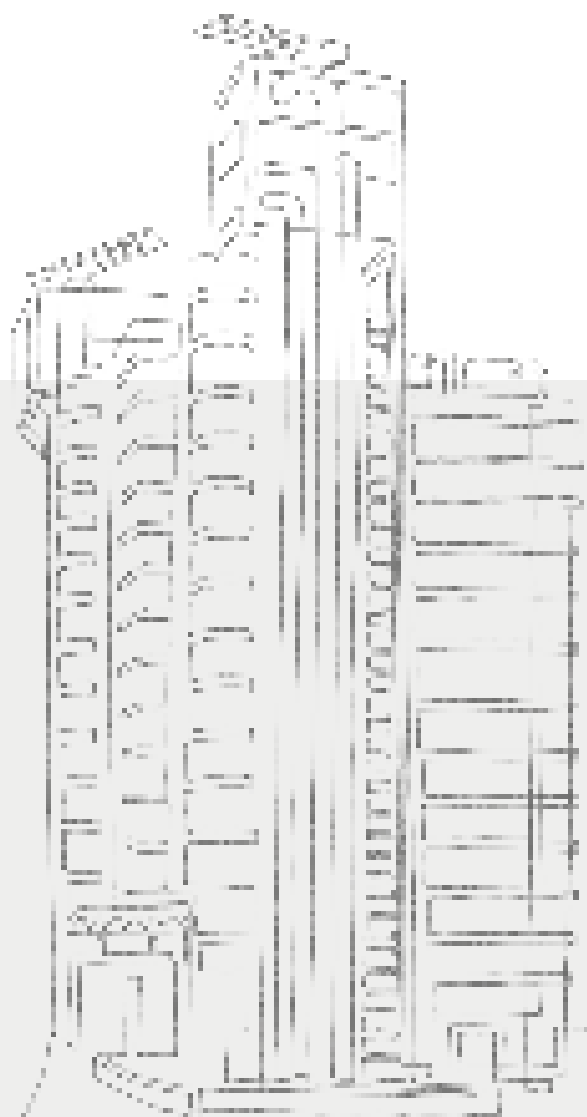
### Members' funds

The following amounts are proposed to be transferred to members' personal reserve funds. The figures stated are after the deduction of members agent's fees incurred.

	2021 \$'000	2020 \$'000
2019 Year of account	1,780.3	-
2018 Year of account	-	978.2
	<b>1,780.3</b>	<b>978.2</b>

# 2019 year of account for syndicate 5623

32	Managing agent's report
33	Statement of managing agent's responsibilities
34	Independent auditor's report to the members of Syndicate 5623 - 2019 closed year of account
37	Profit or loss account
38	Balance sheet closed
39	Cash flow statement
40	Statement of changes in members' balances
41	Notes to the 2019 syndicate underwriting year accounts
45	Two-year summary of closed year results at 31 December 2021
46	Managing agent corporate information



# Managing agent's report

---

The syndicate underwriting year accounts have been prepared under the Insurance Accounts Directive (Lloyd's Syndicate and Aggregate Accounts) Regulations 2008 (the 'Lloyd's Regulations') and in accordance with the Syndicate Accounting Byelaw (No.9 of 2005), including Financial Reporting Standard 102 (FRS 102) and Insurance Contracts 103 (FRS 103) in accordance with the provisions of Schedule 3 of the Large and Medium-size Companies and Groups (Accounts and Reports) Regulations relating to insurance companies.

Members participate on a syndicate by reference to a year of account and each syndicate year of account is a separate annual venture. These accounts relate to the 2019 year of account which has been closed by reinsurance to close at 31 December 2021; consequently the balance sheet represents the assets and liabilities of the 2019 year of account and the profit or loss account reflect the transactions for that year of account during the 36 months period until closure. The 2019 closed year of account profit \$1.8m includes a reinsurance to close deficit from the 2018 year of account of nil (note 7).

## Principal activity

Please refer to the Managing agent's report in syndicate 5623 annual accounts for details around the principal activities of the syndicate.

## Directors

A list of directors of the managing agent who held office during the current year can be found on page 46 of the syndicate annual accounts.

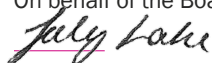
## Disclosure of information to the auditor

The directors of the managing agent who held office at the date of approval of this managing agent's report confirm that, so far as they are each aware, there is no relevant audit information of which the syndicate's auditor is unaware; and each director has taken all the steps that they ought to have taken as a director to make themselves aware of any relevant audit information and to establish that the syndicate's auditor is aware of that information.

## Auditor

Pursuant to Section 14(2) of Schedule 1 of the Insurance Accounts Directive (Lloyd's Syndicate and Aggregate Accounts) Regulations 2008, the auditor will be deemed to be reappointed and Ernst & Young LLP will therefore continue in office.

On behalf of the Board



**S M Lake**

**Finance Director**

2 March 2022

# Statement of managing agent's responsibilities

---

The directors of the managing agent are responsible for preparing the syndicate underwriting year accounts in accordance with the Insurance Accounts Directive (Lloyd's Syndicate and Aggregate Accounts) Regulations 2008 and the Lloyd's Syndicate Accounting Byelaw. They have elected to prepare the accounts in accordance with FRS 102 The Financial Reporting Standard applicable in the UK and Republic of Ireland.

Under Insurance Accounts Directive (Lloyd's Syndicate and Aggregate Accounts) Regulations 2008 the directors of the managing agent must not approve the underwriting year accounts unless they are satisfied that they give a true and fair view of the result of the underwriting year at closure. In preparing these accounts, the directors of the managing agent are required to:

- select suitable accounting policies and then apply them consistently and where there are items which affect more than one year of account, ensure a treatment which is equitable between the members of the syndicate affected is used;
- make judgements and estimates that are reasonable and prudent;
- state whether applicable Accounting Standards have been followed, subject to any material departures disclosed and explained in the accounts;
- assess the syndicate's ability to continue as a going concern, disclosing, as applicable, matters related to going concern; and
- use the going concern basis of accounting unless they either intend to cease trading, or have no realistic alternative but to do so. As explained in note 1 the directors of the managing agent have not prepared the underwriting year accounts on a going concern basis.

The directors of the managing agent are responsible for keeping adequate and proper accounting records that are sufficient to show and explain the syndicate's transactions and disclose with reasonable accuracy at any time the financial position of the syndicate and enable them to ensure that the underwriting year accounts comply with the Insurance Accounts Directive (Lloyd's Syndicate and Aggregate Accounts) Regulations 2008. They are responsible for such internal control as they determine is necessary to enable the preparation of accounts that are free from material misstatement, whether due to fraud or error, and have general responsibility for taking such steps as are reasonably open to them to safeguard the assets of the company and to prevent and detect fraud and other irregularities.

On behalf of the Board



**S M Lake**

**Finance Director**

2 March 2022

# Independent auditor's report to the members of Syndicate 5623 2019 closed year of account

## Opinion

We have audited the syndicate underwriting year accounts for the 2019 year of account of syndicate 5623 ('the syndicate') for the three years ended 31 December 2021 which comprise the Profit or loss account, the Balance sheet, the Cash flow statement, the Statement of changes in members' balances and the related notes 1 to 11, including a summary of significant accounting policies. The financial reporting framework that has been applied in their preparation is applicable law and United Kingdom Accounting Standards including FRS 102 'The Financial Reporting Standard applicable in the UK and Republic of Ireland' and FRS 103 'Insurance Contracts' (United Kingdom Generally Accepted Accounting Practice).

In our opinion, the syndicate underwriting year accounts:

- give a true and fair view of the profit for the 2019 closed year of account;
- have been properly prepared in accordance with United Kingdom Generally Accepted Accounting Practice; and
- have been prepared in accordance with the requirements of The Insurance Accounts Directive (Lloyd's Syndicate and Aggregate Accounts) Regulations 2008 and have been properly prepared in accordance with the Lloyd's Syndicate Accounting Byelaw (no. 8 of 2005).

## Basis for opinion

We conducted our audit in accordance with International Standards on Auditing (UK) (ISAs (UK)) and applicable law. Our responsibilities under those standards are further described in the Auditor's responsibilities for the audit of the syndicate underwriting year accounts section of our report. We are independent of the syndicate in accordance with the ethical requirements that are relevant to our audit of the syndicate underwriting year accounts in the UK, including the FRC's Ethical Standard as applied to other entities of public interest, and we have fulfilled our other ethical responsibilities in accordance with these requirements.

We believe that the audit evidence we have obtained is sufficient and appropriate to provide a basis for our opinion.

## Emphasis of matter – closure of the 2019 year of account

We draw attention to the Basis of preparation which explains that the 2019 year of account of syndicate 5623 has closed and all assets and liabilities transferred to the 2020 year of account by reinsurance to close at 31 December 2021.

As a result, the syndicate underwriting year accounts for the 2019 year of account of syndicate 5623 have been prepared under a basis other than going concern.

Our opinion is not modified in respect of this matter.

## Other information

The other information comprises the information included in the annual report, other than the syndicate underwriting year accounts and our auditor's report thereon. The managing agent is responsible for the other information contained within the annual report.

Our opinion on the syndicate underwriting year accounts does not cover the other information and, except to the extent otherwise explicitly stated in this report, we do not express any form of assurance conclusion thereon.

Our responsibility is to read the other information and, in doing so, consider whether the other information is materially inconsistent with the syndicate underwriting year accounts or our knowledge obtained in the course of the audit or otherwise appears to be materially misstated. If we identify such material inconsistencies or apparent material misstatements, we are required to determine whether this gives rise to a material misstatement in the syndicate underwriting year accounts themselves. If, based on the work we have performed, we conclude that there is a material misstatement of the other information, we are required to report that fact.

We have nothing to report in this regard.

## Matters on which we are required to report by exception

We have nothing to report in respect of the following matters where The Lloyd's Syndicate Accounting Byelaw (no. 8 of 2005) requires us to report to you, if in our opinion:

- the managing agent in respect of the syndicate has not kept adequate accounting records; or
- the syndicate underwriting year accounts are not in agreement with the accounting records.

## Responsibilities of the managing agent

As explained more fully in the Statement of Managing Agent's Responsibilities set out on page 33, the managing agent is responsible for the preparation of the syndicate underwriting year accounts in accordance with The Insurance Accounts Directive (Lloyd's Syndicate and Aggregate Accounts) Regulations 2008 and The Lloyd's Syndicate Accounting Byelaw (no. 8 of 2005) and for being satisfied that they give a true and fair view, and for such internal control as the managing agent determines is necessary to enable the preparation of the syndicate underwriting year accounts that are free from material misstatement, whether due to fraud or error.

In preparing the syndicate underwriting year accounts, the managing agent is responsible for assessing the syndicate's ability to realise its assets and discharge its liabilities in the normal course of business, disclosing, as applicable, any matters that impact its ability to do so.

## Auditor's responsibilities for the audit of the syndicate underwriting year accounts

Our objectives are to obtain reasonable assurance about whether the syndicate underwriting year accounts as a whole are free from material misstatement, whether due to fraud or error, and to issue an auditor's report that includes our opinion. Reasonable assurance is a high level of assurance but is not a guarantee that an audit conducted in accordance with ISAs (UK) will always detect a material misstatement when it exists. Misstatements can arise from fraud or error and are considered material if, individually or in the aggregate, they could reasonably be expected to influence the economic decisions of users taken on the basis of these syndicate underwriting year accounts.

## *Explanation as to what extent the audit was considered capable of detecting irregularities, including fraud*

Irregularities, including fraud, are instances of non-compliance with laws and regulations. We design procedures in line with our responsibilities, outlined above, to detect irregularities, including fraud. The risk of not detecting a material misstatement due to fraud is higher than the risk of not detecting one resulting from error, as fraud may involve deliberate concealment by, for example, forgery or intentional misrepresentations, or through collusion.

The extent to which our procedures are capable of detecting irregularities, including fraud, is detailed below. However, the primary responsibility for the prevention and detection of fraud rests with both those charged with governance of the managing agent and management.

Our approach was as follows:

We obtained a general understanding of the legal and regulatory frameworks that are applicable to the syndicate and determined that the most significant are direct laws and regulations related to elements of Lloyd's Byelaws and Regulations, and the financial reporting framework (UKGAAP) and requirements referred to by Lloyd's in the Instructions. Our considerations of other laws and regulations that may have a material effect on the syndicate underwriting year accounts included permissions and supervisory requirements of Lloyd's of London, the Prudential Regulation Authority ('PRA') and the Financial Conduct Authority ('FCA').

- We obtained a general understanding of how the syndicate is complying with those frameworks by making enquiries of management, internal audit, and those responsible for legal and compliance matters of the syndicate. In assessing the effectiveness of the control environment, we also reviewed significant correspondence between the syndicate, Lloyd's of London and other UK regulatory bodies; reviewed minutes of the Board and Risk Committee of the managing agent; and gained an understanding of the managing agent's approach to governance.
- For direct laws and regulations, we considered the extent of compliance with those laws and regulations as part of our procedures on the related syndicate underwriting year accounts' items.

# Independent auditor's report to the members of Syndicate 5623 2019 closed year of account *continued*

---

- For both direct and other laws and regulations, our procedures involved: making enquiries of the directors of the managing agent and senior management for their awareness of any non-compliance of laws or regulations, enquiring about the policies that have been established to prevent non-compliance with laws and regulations by officers and employees, enquiring about the managing agent's methods of enforcing and monitoring compliance with such policies, and inspecting significant correspondence with Lloyd's, the FCA and the PRA.
- The syndicate operates in the insurance industry which is a highly regulated environment. As such the Senior Statutory Auditor considered the experience and expertise of the engagement team to ensure that the team had the appropriate competence and capabilities, which included the use of specialists where appropriate.
- We assessed the susceptibility of the syndicate's underwriting year accounts to material misstatement, including how fraud might occur by considering the controls that the managing agent has established to address risks identified by the managing agent, or that otherwise seek to prevent, deter, or detect fraud. We also considered areas of significant judgement, including complex transactions, performance targets, economic or external pressures and the impact these have on the control environment. Where this risk was considered to be higher, we performed audit procedures to address each identified fraud risk including:
  - Reviewing accounting estimates for evidence of management bias. Supported by our Actuaries we assessed if there were any indicators of management bias in the valuation of insurance liabilities and the recognition of estimated premium income.
  - Evaluating the business rationale for significant and/or unusual transactions.

These procedures included testing manual journals and were designed to provide reasonable assurance that the underwriting accounts were free from fraud or error.

A further description of our responsibilities for the audit of financial statements is located on the Financial Reporting Council's website at <https://www.frc.org.uk/auditorsresponsibilities>. This description forms part of our auditor's report.

## Use of our report

This report is made solely to the syndicate's members, as a body, in accordance with The Lloyd's Syndicate Accounting Byelaw (no. 8 of 2005) and The Insurance Accounts Directive (Lloyd's Syndicate and Aggregate Accounts) Regulations 2008. Our audit work has been undertaken so that we might state to the syndicate's members those matters we are required to state to them in an auditor's report and for no other purpose. To the fullest extent permitted by law, we do not accept or assume responsibility to anyone other than the syndicate and the syndicate's members as a body, for our audit work, for this report, or for the opinions we have formed.



**Stuart Wilson (Senior statutory auditor)**

for and on behalf of Ernst & Young LLP, Statutory Auditor  
London

3 March 2022



# Profit or loss account

2019 year of account for the 36 months ended 31 December 2021

	Notes	2019 year of account \$'000
Gross premiums written		44,476.6
<b>Earned premiums, net of reinsurance</b>		<b>44,476.6</b>
Allocated investment return transferred from the non-technical account		1,190.5
Reinsurance to close premiums received	4	3,447.9
		<b>4,638.4</b>
Gross claims paid		(9,248.5)
Reinsurance to close premiums payable	5	(26,555.1)
<b>Claims incurred, net of reinsurance</b>		<b>(35,803.6)</b>
Net operating expenses	6	(11,556.7)
<b>Balance on the technical account</b>		<b>1,754.7</b>
Profit on foreign exchange		25.6
Investment income		1,190.5
Allocated investment return transferred to the technical account		(1,190.5)
<b>Profit for the 2019 closed year of account</b>	7	<b>1,780.3</b>
Syndicate allocated capacity (£'000)		63,119.9
<b>Profit for the 2019 closed year of account (£'000)</b>		<b>1,345.9</b>
Return on capacity		2.1%

There are no recognised gains or losses in the accounting period other than those dealt with within the profit or loss account above.

# Balance sheet

closed at 31 December 2021

	Notes	2019 year of account \$'000
<b>Assets</b>		
Debtors	8	24,588.3
Cash at bank and in hand		3,786.3
<b>Total assets</b>		<b>28,374.6</b>
<b>Liabilities</b>		
Amounts due to members	9	1,780.3
Reinsurance to close premium payable to close the account – gross amount	5	26,594.3
<b>Total liabilities</b>		<b>28,374.6</b>

The syndicate underwriting year accounts on pages 37 to 44 were approved by the Board of Directors on 2 March 2022 and were signed on its behalf by:



**A P Cox**

Active Underwriter



**S M Lake**

Finance Director

# Cash flow statement

2019 year of account for the 36 months ended 31 December 2021

	2019 year of account \$'000
<b>Reconciliation of profit for the financial year to net cash inflow from operating activities</b>	
Profit for the 2019 closed year of account	1,780.3
Increase in gross reinsurance to close payable	26,594.3
Increase in debtors	(24,588.3)
Investment income received	(1,190.5)
<b>Net cash flows from operating activities</b>	<b>2,595.8</b>
Net purchases of financial instruments	-
Investment income received	1,190.5
<b>Net cash from investing activities</b>	<b>1,190.5</b>
Transfer to members in respect of underwriting participations	-
<b>Net cash from financing activities</b>	<b>-</b>
<b>Net movement in cash and cash equivalents</b>	<b>3,786.3</b>
Cash and cash equivalents at 1 January 2019	-
<b>Cash and cash equivalents at 31 December 2021</b>	<b>3,786.3</b>

# Statement of changes in members' balances

for the 36 months ended 31 December 2021

---

	2019 year of account \$'000
Profit for the 2019 closed year of account	1,780.3
<b>Amounts due to members at 31 December 2021</b>	<b>1,780.3</b>

---

Members participate on syndicates by reference to years of account 'YOA' and their ultimate result, assets and liabilities are assessed with reference to policies incepting in that year of account in respect of their membership of a particular year.

# Notes to the syndicate underwriting year accounts

closed at 31 December 2021

---

## 1 Accounting policies

### Basis of preparation

These underwriting accounts have been prepared in accordance with the Insurance Accounts Directive (Lloyd's Syndicate and Aggregate Accounts) Regulations 2008 ('the Regulations') and applicable Accounting Standards in the United Kingdom, including Financial Reporting Standard 102 (FRS 102) and Insurance Contracts (FRS 103). They have also been prepared in accordance with Lloyd's Syndicate Accounting Byelaw (NO.8 of 2005) and in accordance with the provisions of Schedule 3 of the Large and Medium-size Companies and Groups (Accounts and Reports) Regulations relating to insurance companies.

Whilst the directors of the managing agent have a reasonable expectation that the syndicate has adequate resources to continue in operational existence for the foreseeable future, these financial statements represent the participation of members in the 2019 year of account which closed on 31 December 2021. The accumulated profits of the 2019 year of account will be distributed shortly after publication of these accounts. Therefore the 2019 year of account is not continuing to trade and, accordingly, the directors have not adopted the going concern basis in the preparation of these accounts. The amounts reported would be identical if the accounts had been prepared on a going concern basis as the 2019 year of account will be closed by payment of a reinsurance to close premium, as outlined in note (a) below, which is consistent with the normal course of business for a Lloyd's syndicate and with the approach we have applied to earlier underwriting years.

The principal accounting policies applied in the preparation of these underwriting accounts are set out below. The policies have been consistently applied to all periods presented, unless otherwise stated. All amounts presented are stated in US dollars, being the syndicate's functional currency, and in thousands, unless noted otherwise.

### Underwriting transactions

- a) The underwriting accounts for each year of account are normally kept open for three years before the result on that year is determined. At the end of the three year period, outstanding liabilities can normally be determined with sufficient accuracy to permit the year of account to be closed by payment of a reinsurance to close premium to the successor year of account.
- b) Gross premiums are allocated to years of account on the basis of the inception date of the policy. Commission and brokerage are charged to the year of account to which the relevant policy is allocated. Policies written under binding authorities, lineslips or consortium arrangements are allocated to the year of account into which the arrangement incepts. Additional and return premiums follow the year of account of the original premium. Premiums in respect of reinsurance ceded are attributed to the same year as the original risk being protected. Gross premiums are stated before the deduction of brokerage, taxes and duties levied on them. Estimates are made for pipeline premiums, representing amounts due to the syndicate not yet notified.
- c) Gross claims paid are allocated to the same year of account as that to which the corresponding premiums are allocated and include internal and external claims settlement expenses.
- d) A provision for unexpired risks is made where claims, related expenses and deferred acquisition costs, likely to arise after the balance sheet date in respect of contracts relating to the closing year of account, are expected to exceed the unearned premiums and premiums receivable under these contracts, after the deduction of any acquisition costs deferred.
- e) The reinsurance to close premium is determined by reference to outstanding liabilities, including claims incurred but not yet reported, relating to the closed year and to all previous closed years reinsured therein. Although the estimate of net outstanding liabilities is considered to be fair and reasonable, it is implicit in the estimation procedure that the ultimate liabilities will be at variance from the premium so determined. The reinsurance to close premium includes a provision for unearned premiums and unexpired risks at the balance sheet date, net of deferred acquisition costs.
- f) Please refer to note 1 Accounting policies in syndicate 5623 annual accounts for details around measurement of insurance contracts.

### Comparatives

- g) Comparatives are not provided in these syndicate underwriting year accounts as each syndicate year of account is a separate annual venture.

### Investment return

- h) Investment return consists of the syndicates share of the host syndicate's investment return. The investment return is wholly allocated to the technical account.

# Notes to the syndicate underwriting year accounts

closed at 31 December 2021 *continued*

## 1 Accounting policies *continued*

### Syndicate operating expenses

i) Costs are borne by the host syndicate and are charged to the syndicate via an overrider commission.

### Taxation

j) Under Schedule 19 of the Finance Act 1993, managing agents are not required to deduct basic rate income tax from trading income. In addition, all UK basic income tax deducted from syndicate investment income is recoverable by managing agents and consequently the distribution made to members or their members' agents is gross of tax. Capital appreciation falls within trading income and is also distributed gross of tax. It is the responsibility of members to agree and settle their individual tax liabilities with the Inland Revenue.

k) No provision has been made for any US Federal Income Tax payable on the underwriting results or investment earnings.

l) No provision has been made for any other overseas tax payable by members on underwriting results. Members resident overseas for tax purposes are responsible for agreeing and settling any tax liabilities with the taxation authorities of their country of residence.

### Basis of currency translation

m) The syndicate operates in four separate currency funds of sterling, euro, US dollars and Canadian dollars. Items going through the profit or loss account in sterling, euro and Canadian dollars are translated to US dollars at the three years' average rates of exchange. Assets and liabilities denominated in foreign currencies at the balance sheet date are retranslated to the functional currency at the foreign exchange rate ruling at that date. The euro, sterling and Canadian dollar three years' average exchange rates ruling at 31 December 2021 are euro 0.87, sterling 0.76 and Canadian dollar 1.31.

## 2 Risk management

The 2019 year of account has closed and all assets and liabilities have been transferred to a reinsuring year of account. The result for the year of account was declared in sterling so there is no exchange rate risk. To this extent, the risks that it is exposed to in respect of the reported financial position and financial performance are significantly less than those relating to the open years of account as disclosed in the syndicate annual accounts. Accordingly, these underwriting year accounts do not have associated risk disclosures as required by section 34 of FRS 102. Full disclosures relating to these risks are provided in the syndicate annual accounts.

### 2.1 Capital management

Please refer to note 2.9 in syndicate 5623 annual accounts.

## 3 Segmental analysis

All business was concluded in the UK and relates to reinsurance.

## 4 Reinsurance to close premiums received

	2019 year of account \$'000
Gross reinsurance to close premiums received	3,447.9
Reinsurance recoveries anticipated	-
Reinsurance to closed premiums received, net of reinsurance	<b>3,447.9</b>

## 5 Reinsurance to close premiums payable

	2019 year of account \$'000
Gross reinsurance to close premiums payable	26,555.1
Foreign exchange	39.2
<b>Reinsurance to close premiums payable to 2021</b>	<b>26,594.3</b>

	Reported \$'000	IBNR \$'000	Total \$'000
Reinsurance to close premiums payable	8,400.8	18,193.5	26,594.3
Reinsurance recoveries anticipated	-	-	-
<b>Reinsurance to close premiums payable</b>	<b>8,400.8</b>	<b>18,193.5</b>	<b>26,594.3</b>

## 6 Net operating expenses

	2019 year of account \$'000
Acquisition costs	9,108.3
Reinsurance commissions and profit participation	2,214.7
Administrative expenses	233.7
	<b>11,556.7</b>

Administrative expenses include:

Audit services	49.4
----------------	------

## 7 Analysis of the 2019 year of account result

	2019 year of account \$'000
Amount attributable to business allocated to the 2018 year of account	(33.8)
Profit on the reinsurance to close for the 2019 year of account	1,814.1
	<b>1,780.3</b>

## 8 Debtors

	2019 year of account \$'000
Debtors arising out of direct insurance operations	393.2
Amount due from other syndicates	24,148.3
Other debtors	46.8
	<b>24,588.3</b>

These balances are due within one year.

## 9 Amounts due to members

	2019 year of account \$'000
Profit for the 2019 closed year of account before standard personal expenses	2,148.3
Members standard personal expenses	(368.0)
<b>Amounts due to members at 31 December 2021</b>	<b>1,780.3</b>

## 10 Other charges

	2019 year of account \$'000
Profit commission paid to syndicate 3623	-

## 11 Related party transactions

Please refer to page 29 of the syndicate annual accounts for further details of related party transactions for the 2019 year of account.

The business written by syndicate 5623 is ceded from syndicate 3623, for which syndicate 5623 pays a profit commission. This profit commission payable and the override commission is included within operating expenses. As at the balance sheet date, the syndicate has no intercompany balances outstanding with the managing agent. The intercompany position with syndicate 3623 at 31 December 2021 is disclosed above in note 8 (debtors).

Beazley Furlonge Limited, the managing agent of syndicate 5623, is a wholly-owned subsidiary of Beazley plc.

Beazley Furlonge Limited as the managing agent of the syndicate is responsible for settling intercompany balances with other managed syndicates and net amounts due to/from other related entities.



# Two-year summary of closed year results (unaudited)

at 31 December 2021

	2019	2018
Syndicate allocated capacity – £'000	63,120	22,500
Syndicate allocated capacity – \$'000	83,318	29,250
Capacity utilised	42.8%	28.3%
Aggregate net premiums – \$'000	35,670	8,268
Underwriting profit as a percentage of gross premiums	8.4%	29.7%
Return on capacity	2.1%	3.2%
Results for an illustrative £10,000 share	\$	\$
Gross premiums	5,651	3,675
Net premiums	5,651	3,675
Reinsurance to close from an earlier account	546	-
Net claims	(1,465)	(1,050)
Reinsurance to close the year of account	(4,207)	(1,493)
Underwriting profit	525	1,132
Profit/(loss) on foreign exchange	1	(44)
Syndicate operating expenses	(433)	(649)
Balance on technical account	93	439
Gross investment return	189	99
Profit before personal expenses	282	538
Illustrative personal expenses		
Managing agent's profit commission	-	(103)
Profit after illustrative profit commission and personal expenses (\$)	282	435
Profit after illustrative profit commission and personal expenses (£)	213	319

## Notes:

- 1 The illustrative profit commission and personal expenses are estimates of amounts which might be charged on an illustrative share of £10,000. The agency agreements for 1991 and subsequent years of account only provide for the deduction of fees and profit commission on behalf of the managing agent.
- 2 The effect of any minimum charges on personal expenses or deficit clauses on profit commission have been ignored.
- 3 Internal claims settlement expenses have been included in 'net claims'.
- 4 The above figures are stated before members' agents' fees.
- 5 Profit after illustrative profit commission and personal expenses is shown in dollars and converted to sterling at the closing rate.
- 6 Gross and net premium amounts shown above are net of brokerage expenses.

# Managing agent corporate information

---

Beazley Furlonge Limited has been the managing agent of syndicate 5623 throughout the period covered by this report and the registered office is 22 Bishopsgate, London, EC2N 4BQ.

## Directors

D L Roberts<sup>1</sup> – Chairman

A P Cox – Active Underwriter and Chief Executive Officer

R Anarfi

G P Blunden<sup>1</sup>

I Fantozzi

N H Furlonge<sup>1</sup>

D A Horton (resigned 31/03/2021)

C C W Jones (resigned 26/02/2021)

S M Lake

C LaSala<sup>1</sup>

A S Pryde (resigned 31/05/2021)

A J Reizenstein<sup>1</sup>

L Santori<sup>1</sup> (appointed 01/03/2021)

R Stuchbery<sup>1</sup>

K W Wilkins<sup>1</sup> (resigned 01/01/2022)

N Wall<sup>1</sup> (appointed 01/02/2021)

<sup>1</sup> Non-Executive Director.

## Company secretary

C P Oldridge

## Managing agent's registered office

22 Bishopsgate

London

EC2N 4BQ

United Kingdom

## Registered number

01893407

## Auditor

Ernst & Young LLP

25 Churchill Place

London

E14 5EY

## Banker

Deutsche Bank AG

Winchester House

London

1 Great Winchester Street

EC2N 2DB

# Notes

---



Beazley Syndicate 5623  
online annual report 2021

[investor.relations.beazley.com](http://investor.relations.beazley.com)

If you have finished reading this report and no longer wish to keep it, please pass it on to other interested readers, return it to Beazley or recycle it. Thank you.

*Designed and produced by:  
Instinctif Partners [www.creative.instinctif.com](http://www.creative.instinctif.com)*



This report is printed on an FSC® material made from sustainable pre-consumer waste.

Material is manufactured to the environmental management system ISO 14001, FSC® chain-of-custody certified, elemental chlorine and acid free.

Our UK printer is also ISO 14001 certified, FSC®, CarbonNeutral® and Alcohol Free.

This report is fully biodegradable and recyclable.

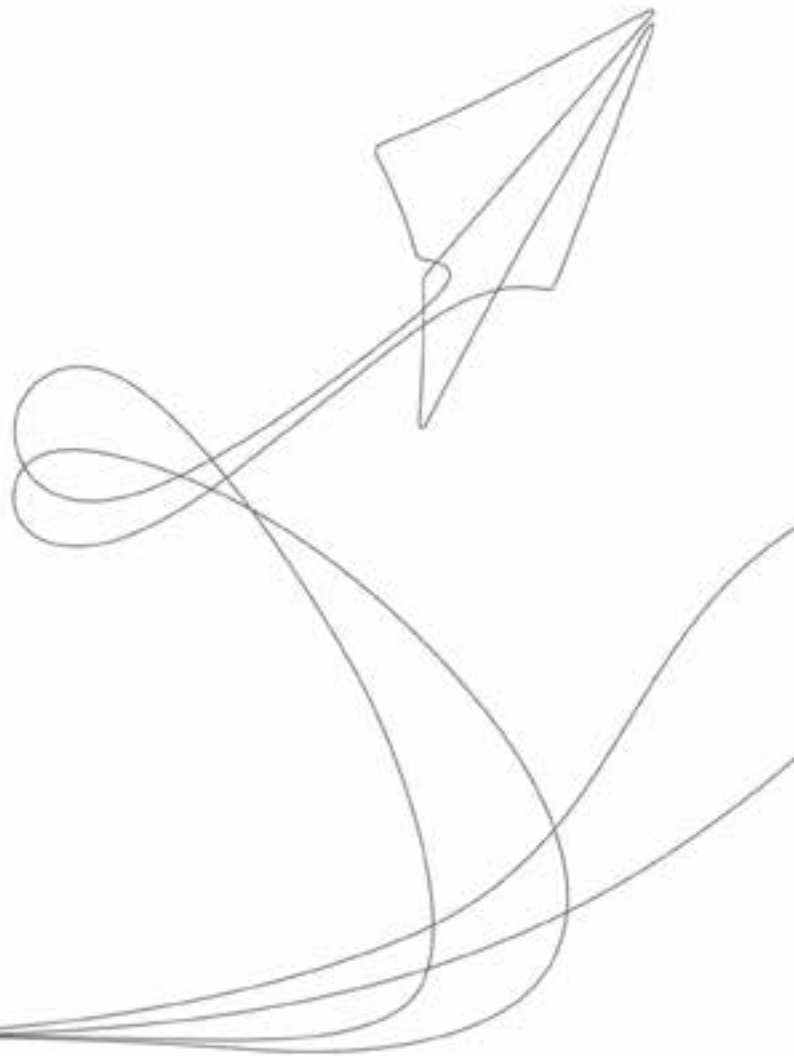
**Beazley Furlonge Limited**

Syndicate 5623 at Lloyd's

22 Bishopsgate  
London  
EC2N 4BQ

T +44 (0)20 7667 0623

[info@beazley.com](mailto:info@beazley.com)  
[www.beazley.com](http://www.beazley.com)



beazley

# Basics Funded Study's Annual Report 2021